



PRESS KIT

DICKSON[®]
woven flooring

New flooring collection

Introducing Dickson's **new woven vinyl flooring collection**. A combination of the brand's **know-how** and **contemporary vision**, it offers a fresh approach to flooring with a strong design sensibility.

Owing to its **innovative and original stylistic effects, jacquards** and **new colors** have been added for an even more graphic, designer aesthetic. This resolutely modern new collection is composed of **eight ranges**.

Dickson Woven Flooring



The rich textures **inspired by nature** and elegantly subtle, sophisticated colors demonstrate the esthetic qualities of PVC, the raw material used in the flooring production process. Its **timeless** neutral color palette comes in a range of deep, delicate hues. The intensely bold colors possess **character and personality**. From the strikingly classic to outstandingly audacious, its graphic effects give any room a distinctive feel.

Woven from **revolutionary fibers** and combining the **superior quality of vinyl** with the **texture of traditional woven rugs**, Dickson flooring is hard-wearing and stylish.

Technically innovative, the collection has been designed and developed for use in high-footfall public areas, such as hotels, offices, shops and restaurants, and adds a **modern, sophisticated touch** to any space. Dickson flooring is **hard-wearing, comfortable and easy to maintain with a strong visual impact**. The Design Studio has pushed woven flooring to its limits by developing a product that owes its vibrancy to an interplay of textures and effects.

FLOORS WITH ADVANCED TECHNICAL PROPERTIES



SoundGuard® technology is an advanced technology designed to improve comfort and sound absorption. Dickson has developed a high-performance system that effectively absorbs ambient noise and significantly reduces impact noise. Acoustic comfort is essential for well-being and ideal for offices and hotels.



All Dickson flooring collections have been **awarded European "33-Heavy commercial traffic" certification**, the highest classification for textile flooring for heavy foot traffic in commercial spaces.



Dickson developed the first woven vinyl flooring, guaranteed not to fray thanks to **FrayGuard® technology**. Designed by the brand, this technology considerably reduces the common phenomenon of fraying when cutting and laying carpets and rugs. The FrayGuard® process extends the life of the weave and guarantees clean-cut edges for fast, efficient and impeccable fitting.

Flooring adapted to heavy foot traffic

Dickson flooring is designed for heavy foot traffic in homes and businesses. Woven from revolutionary vinyl fibers, it is highly resistant to wear and tear.

An innovative textile solution with an advanced design, Dickson flooring offers convenience and stability, even in the most demanding environments.



CERAMIC GREY - ALLU J516



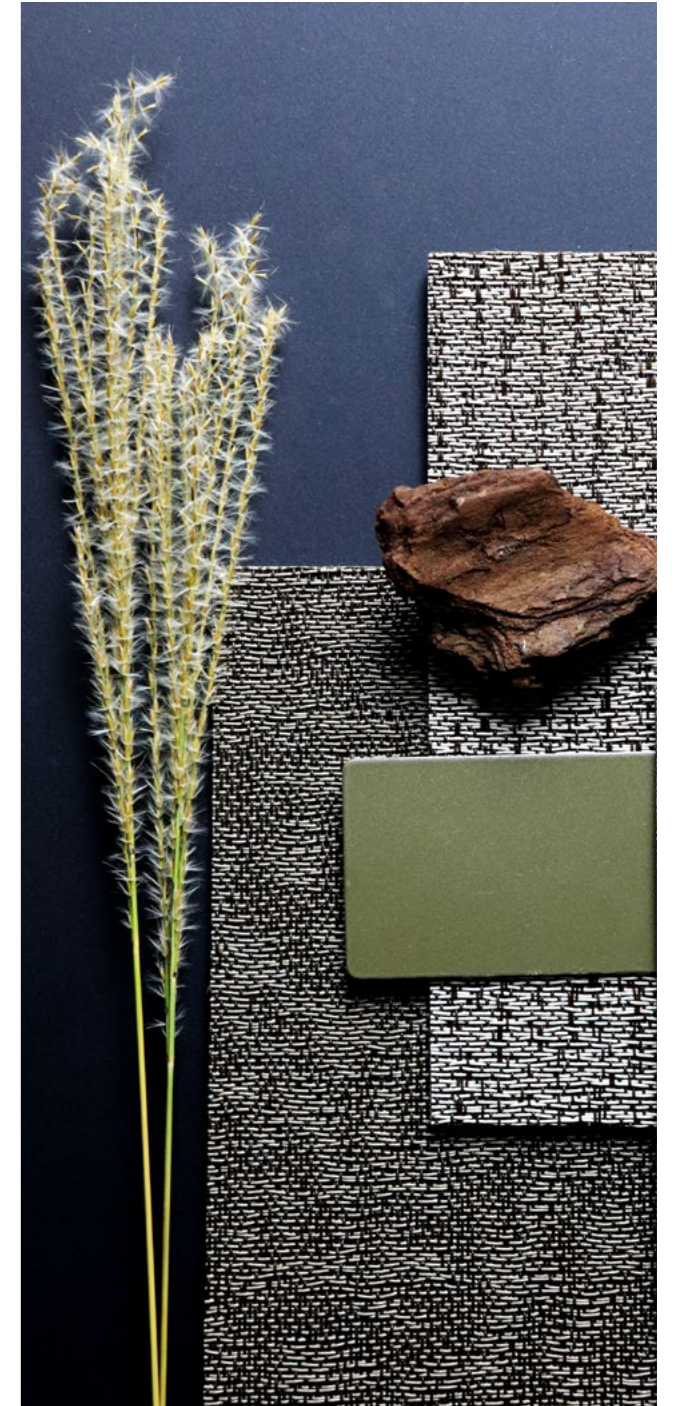
MAHOGANY - ECUM J546, KOPI BRONZE - ECUM J520



ISLAY BLUE - ELEG J533, STONE ELEG - J532



CHAMPAGNE BEIGE - MIRA J527, RANNOCH ROSE - MIRA J550



Dickson Woven Flooring

The new Dickson flooring collection offers an **unrivalled choice of patterns, materials and textures, and unique new colors.**

It rounds out Dickson's designer range, to lend it a **strong and distinctive identity.**

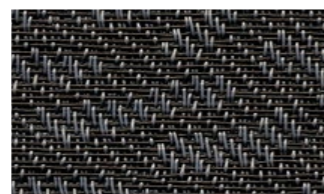
COSMOS

The Cosmos model's vibrant pattern, constantly in motion, produces a **harmonious ambience** made of delicate nuances. Its wave forms draw the eye in one direction, then another, to lighten the texture and create a pleasant, gentle rhythm.

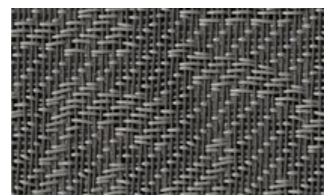
Available in naturally stylish neutral tones, this range is composed of **four products.**



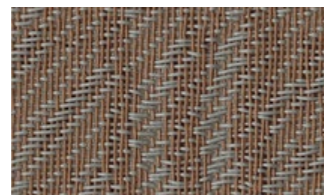
JET BLACK



MARRON BLACK



SKY SILVER

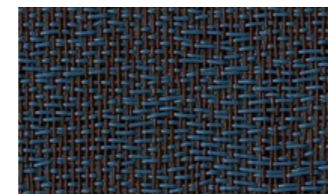


STRONSAY BEIGE

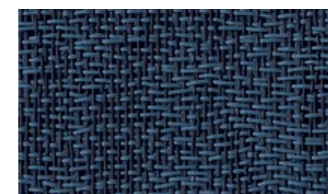
ÉCUME

The **seven products** in the Ecume range feature curves and wave patterns mixing several shapes and colors.

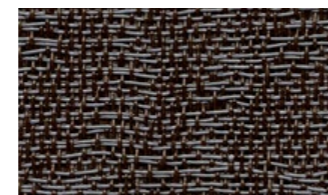
By virtue of its palette of deep hues inspired by nature, this **elegant and contemporary** line is suited to all interiors and styles



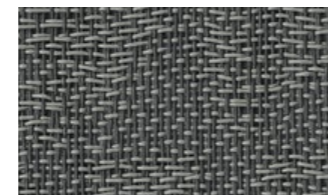
BOWLAND BLUE



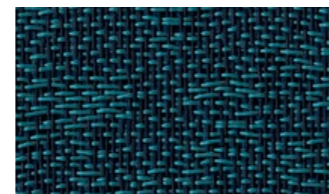
DIAMOND BLUE



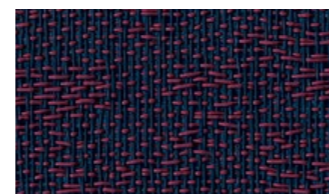
KOPI BRONZE



XENON GREY



VERTIGO BLUE



CHEVIOT RED

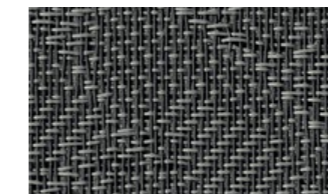


MAHOGANY

EMPREINTE

Empreinte's harmonious weave creates **a resolutely modern pattern** suited to even the boldest of styles and decorative schemes.

Composed of **four products**, this timeless range is available in neutral colors and nuances of gray, with hues ranging from deep to delicate



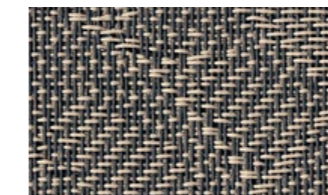
TUNGSTEN SILVER



TITANIUM SILVER



SELENE BRONZE

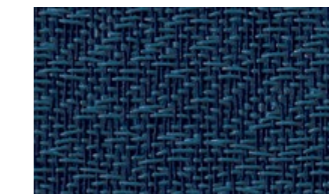


PENNINE GREY

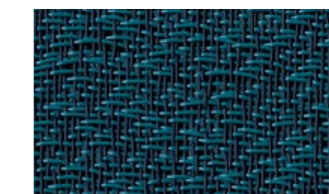
MIRAGE

Mirage is a range of **twelve products**, with distinctive textures that draw on the sisal effect. **Inspired by nature**, this product has a raw and irregular surface relief.

It is available in a selection of mostly dark colors with a smattering of light and luminous hues to enliven the palette and give full effect to the shadier tones



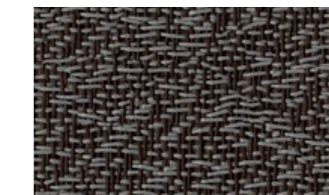
ANTRIM BLUE



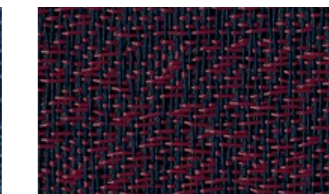
VIPER BLUE



DUSTY GREEN



WILD EARTH



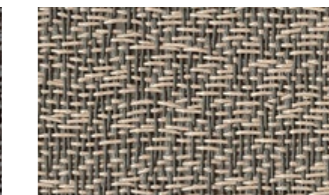
MERLOT RED



RANNOCH ROSE



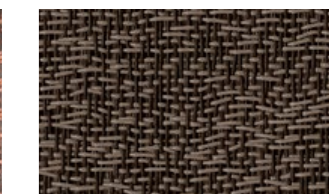
CHAMPAGNE BEIGE



NIMBUS BEIGE



PERSIAN YELLOW



ARIZONA BRONZE



SILICON SILVER



STORNAWAY SILVER

ÉLÉGANCE

A **timeless basic** with a soft texture and soothing, understated patterns, the Elegance range is composed of **seven products**.

Available in a palette of carefully selected neutral and subtly colorful hues, it represents a new generation of restyled plains.



PACIFICA BLUE



PEARL BROWN



ZAFFRE BLUE



ORKNEY TAUPE



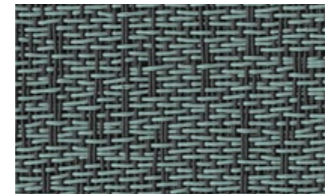
YELLOW TAUPE



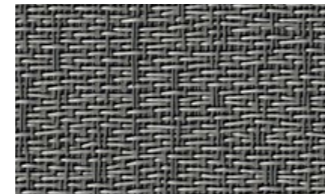
ISLAY BLUE



SMOKE



CELADON GREEN



IRIDIUM SILVER



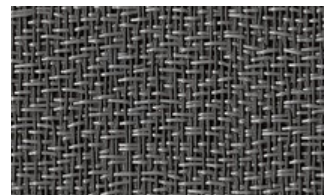
ARDEN GREEN



SNOW SHADOW



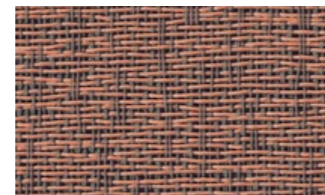
CERAMIC GREY



STONE



CUMBERLAND BEIGE



CALDERA ROSE

ALLURE

Produced in a range of **nine products**, Allure has a **vibrant and colorful texture**. The grain is dominated by dark hues, creating an interplay with the colorful base. The delicate tones subtly bring the surface to life.

Hints of slightly deeper colors accent the softness of this range in neutral hues.

BE TWEED

This new range of **three products** draws on the **timeless qualities of tweed**. Be Tweed is available in a bold and trendy palette when color matters most.

Designed for monolithic tile layouts, Be Tweed is ideal for creating a plain effect, particularly on raised flooring.



SEA STORM



MIRAGE GREY



SAND STORM

BE EASY

The Be Easy range is composed of semi-plains with understated silver accents that change according to the angle and amount of light.

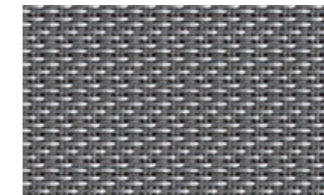
The translucent warp yarn lends **exceptional depth to the textile**. Be Easy is available in a range of **four products**.



STORM BLACK



PHANTOM GREY



METEORITE SILVER



DARK ROBUSTO

Dickson flooring project,

the new floor configurator
Try out and modulate
your flooring

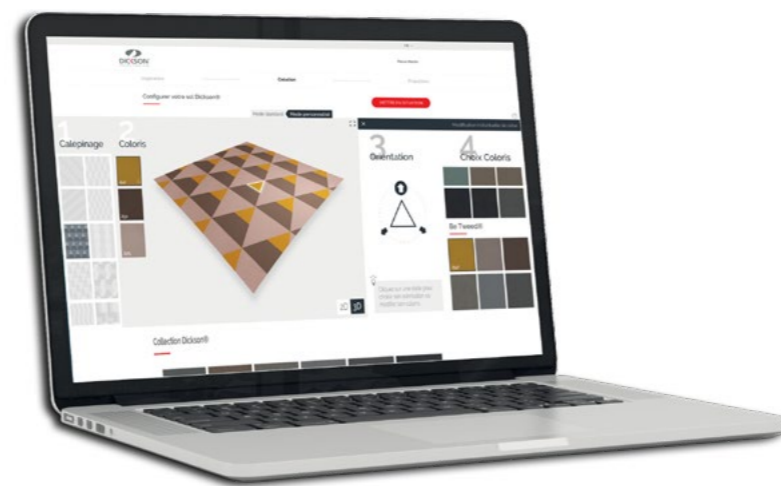
From offices to hotels to homes, every space is unique !

As each room presents new challenges, so does your choice of furnishings and décor.

The flooring simulator helps architects and designers devise interior spaces. Delivering a **close-to-life and unique 3D experience**, the tool combines **digital technology with a high-end service**.

The flooring simulator is the first in the sector to include chromatic variations and offer ultra-realistic simulations.

Available at www.dicksonflooringproject.com and viewable in any browser, the Dickson Flooring Project gives access to the brand's entire range of woven vinyl flooring collections



www.dicksonflooringproject.com

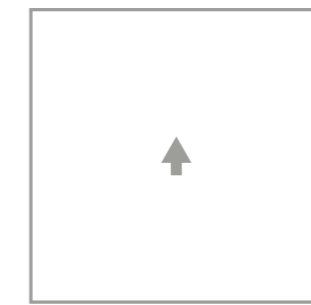
UNIQUE AND ORIGINAL SHAPES

Dickson Flooring **free you from standard layouts** or allows you to complement them by mixing products to create rhythm, perspectives and reflections to transform your interiors. Thanks to its lighting effects and textures, it gives **free rein to your imagination**.

With multiple existing shapes and a unique color palette, it has never been easier to break the rules and **turn your flooring into a designer feature**. From an infinitive source of creative expression, your flooring becomes an art form.

Now available to order in multiple shapes, Dickson flooring offers countless layout possibilities.

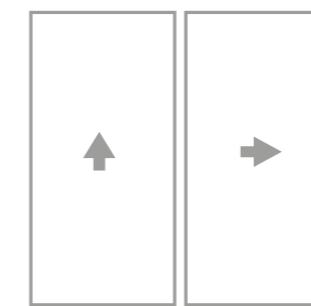
COMBINABLE SHAPES LES FORMES COMBINABLES



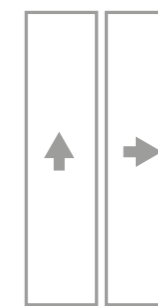
XL TILES / DALLES XL
100 X 100 cm / 39.37" X 39.37"



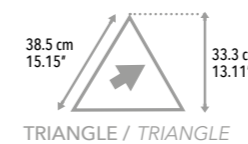
TILES / DALLES
50 X 50 cm / 19.69" X 19.69"



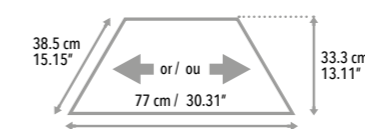
XL PLANKS / LAMES XL
50 X 100 cm
19.69" X 39.37"



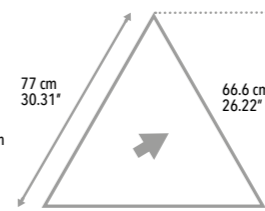
PLANKS / LAMES
25 X 100 cm
9.84" X 39.37"



TRIANGLE / TRIANGLE

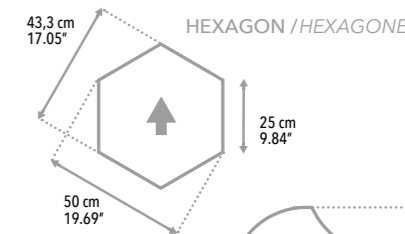


HALF HEXAGON / DEMI HEXAGONE

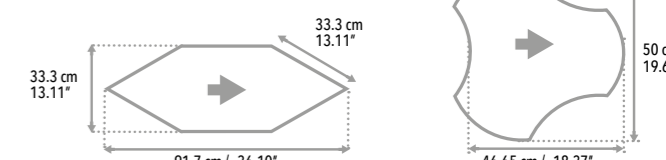


XL TRIANGLE / TRIANGLE XL

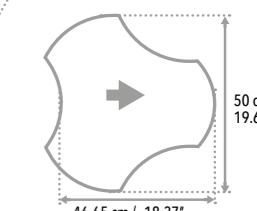
NON COMBINABLE SHAPES LES FORMES NON COMBINABLES



HEXAGON / HEXAGONE



PRISM / PRISME

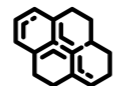


GAMMA / GAMMA

↑ Warp direction / Sens de la chaîne



Environment



0% PHTHALATE

Dickson's R&D department **has released a collection of flooring guaranteed phthalate-free**, top and bottom layer included, and without plasticizers.

A company that **respects the environment, users, air quality and indoor spaces**, Dickson is committed to eliminating these controversial substances in its new collection as part of an **eco-innovation approach** compliant with the European REACH* label.

*REACH is a European regulation (regulation n°1907/2006) that came into force in 2007 to address the production and use of chemical substances in European industry. It concerns the registration, evaluation, authorization and restriction of chemical substances manufactured, imported and sold on the European market. <https://www.ecologique-solidaire.gouv.fr/reglementation-reach>.



FLOORSCORE CERTIFICATION

As we spend most of our lives inside, good indoor air quality is vital. **The air we breathe in our homes or workplaces can affect our comfort and health**, from inconvenient odors, and eye and skin irritation, to the worsening or development of pathologies such as respiratory allergies.

Awarded **Floorscore* certification**, Dickson flooring promotes **good indoor air quality** by controlling emissions of volatile organic compounds into the air.

* RFCI certification: FloorScore® is the most recognized indoor air quality (IAQ) certification standard for hard surface flooring materials, adhesives, and underlayments. FloorScore was developed by the Resilient Floor Covering Institute (RFCI) with SCS Global Services (SCS). It qualifies for leading building industry rating programs including LEED v4, WELL, BREEAM, and CHPS.



AN ENVIRONMENTALLY FRIENDLY COMPANY

By optimizing **its energy management, reducing its use of chemical substances** and obtaining **ISO 14001* and OHSAS 18001** certifications**, Dickson strives to be an **environmentally friendly company** that limits its impact on the environment as far as possible. All actions that serve to achieve this goal are grouped under the **Greenovation label**. Waste management at its head office and production sites, product life cycle management and wastewater recycling are just some of the practices implemented by the company.

* The ISO standard provides management, staff and external stakeholders with the guarantee that a company's environmental impact is measured and improved. <https://www.iso.org/fr/iso-14001-environmental-management.html>

** The OHSAS 18001 standard sets out the requirements for occupational health and safety management good practice. It provides guidance to achieve better risk management in order to reduce the number of accidents, comply with legislation and improve performance. <https://ohsas-18001.fr/>



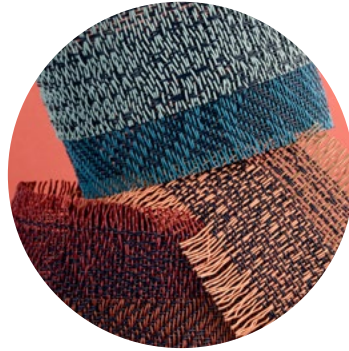
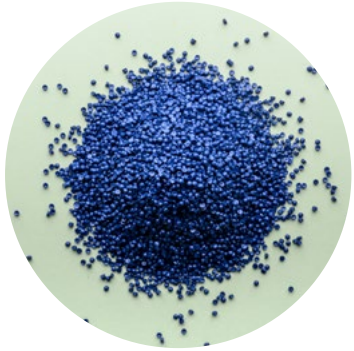
ABOUT DICKSON

A leader in the field of technical textiles, Dickson is now recognized throughout the world as **the leader in indoor and outdoor French-made fabrics**. Sold under two flagship brands - **DICKSON®** and **SUNBRELLA®** - its products are in demand from leading names in design, architecture and sailing.

Driving the company's growth, innovation enables Dickson to diversify its product lines by offering a wide selection of technical and designer textiles to meet home improvement requirements. Its business now covers four markets: **solar protection, woven flooring, interior and exterior upholstery and boat equipment**.

Combining advanced technology and originality, the Dickson style is now available in more than **110 countries on five continents**.

In 2019, Dickson-Constant became **one of the first textile companies certified to ISO 45001** on requirements for occupational health and safety.



DICKSON CONSTANT

contact@dickson-constant.com

www.dickson-constant.com

-

Tél. +33(0)3 20 45 59 59

-

Press contacts : Agence RP Carrées

Perrine Puyserver - perrine.puyserver@rp-carrees.com - +33 6 46 48 15 13

Constance Bricet - constance.bricet@rp-carrees.com - +33 6 46 48 45 50