



&

lookbook
&-collection

**modu
lyss®**



lookbook
&-collection

**modu
lyss®**

get
creative

lookbook

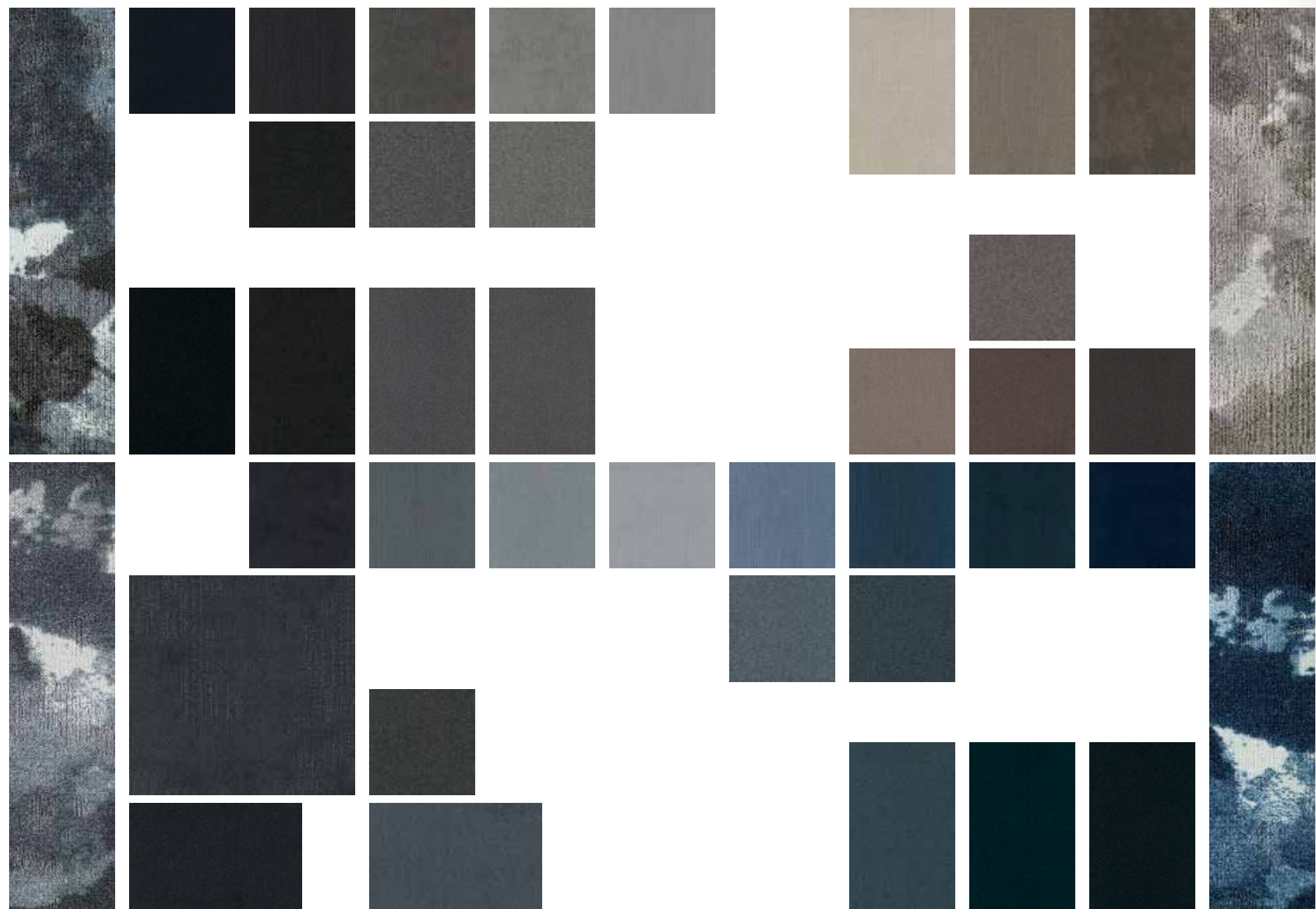
&-collection

Cambridge&
Perpetual&
Fluid&
Fashion&
Velvet&

The &-collection is our long-running coordinated approach to the way we design carpet tiles. Bold & vibrant, sophisticated & luxurious. & is a collection of styles that bring personality to every space.

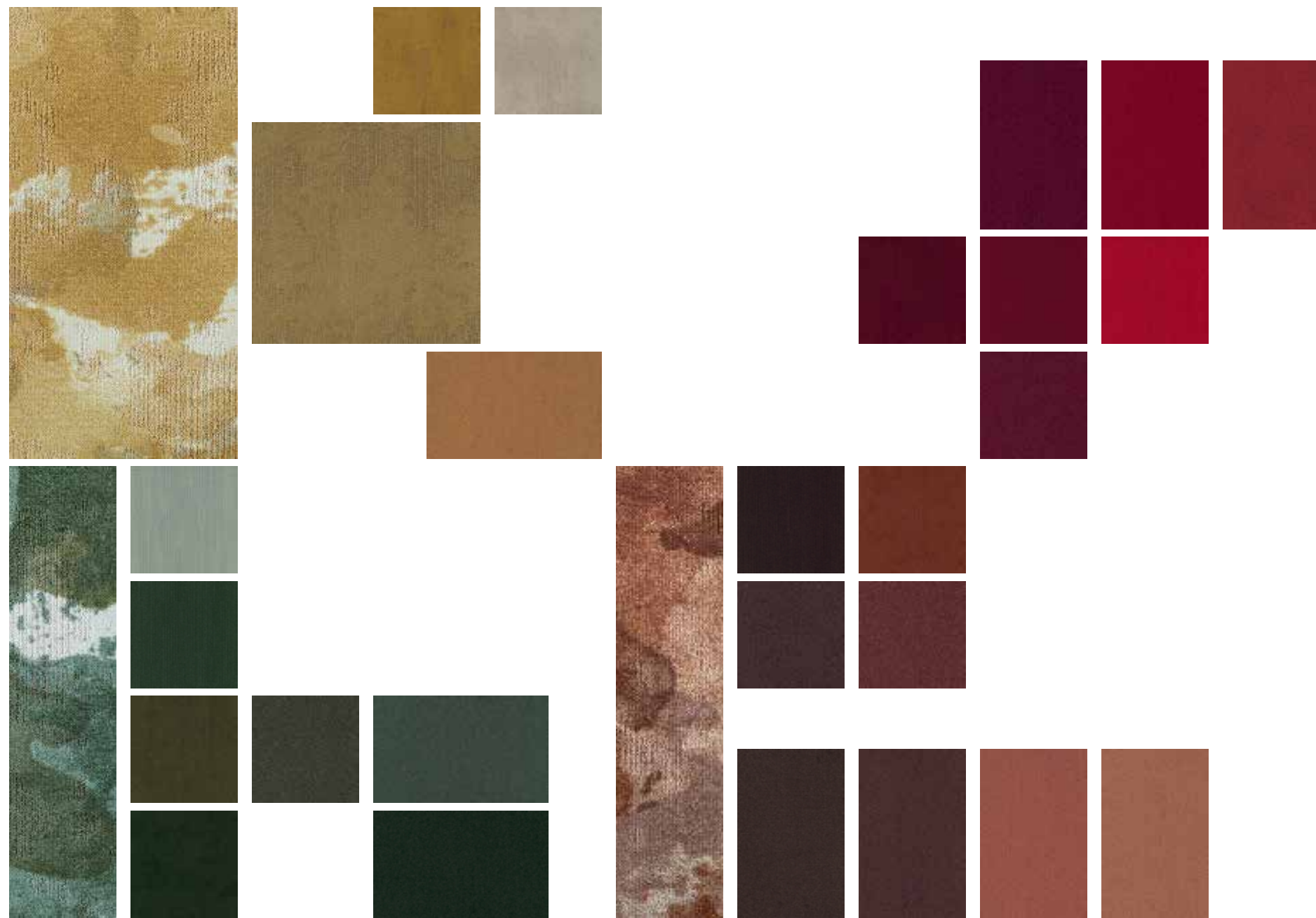
We regularly add a new design to the collection, offering new variations in pattern, texture, and colour.

This lookbook is meant to trigger your curiosity and creative spirit, revealing just some of the flooring possibilities the &-collection places at your disposal for your next projects.



Colour is a powerful tool to add character to an interior. While our own coordinated colour palette can help to set the right mood, sometimes you need a specific colour that matches the brand identity or creative concept of your project.

Our custom colour service gives you the freedom to recolour the 5 designs of the &-collection in any colour that you can dream of. These colours are available from 200 m².



&-collection
5 designs, 72 colours,
endless possibilities

Cambridge& _____

Cambridge& offers a sensory experience through the perfect harmony of colour and texture. Its rich and lush cut pile finish and varied colour palette make Cambridge& ideal for promoting comfort and luxury in hospitality interiors and other commercial spaces.



Cambridge& 224



Cambridge& 613



Cambridge& 579



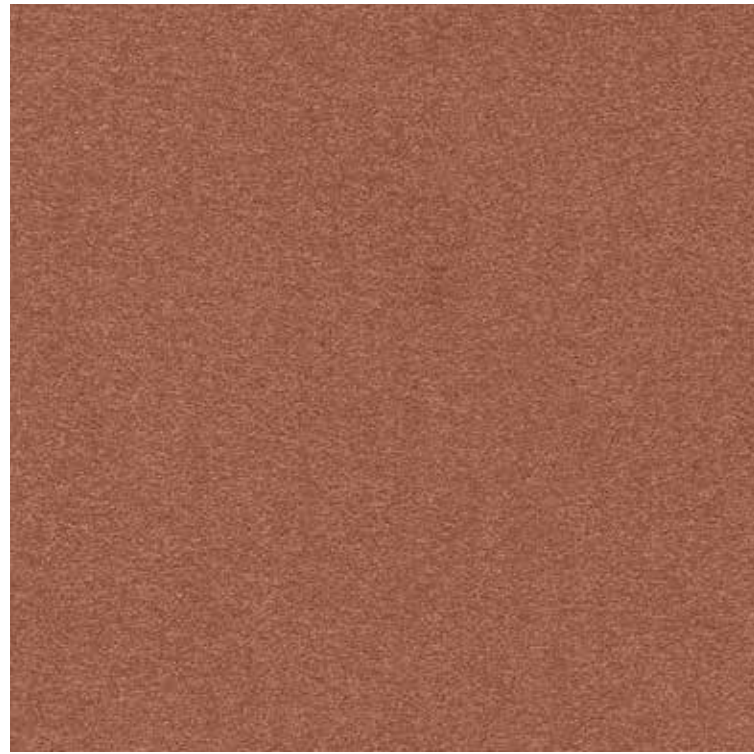
Cambridge& 817

autumn vibes





Cambridge & 386, 915, 963

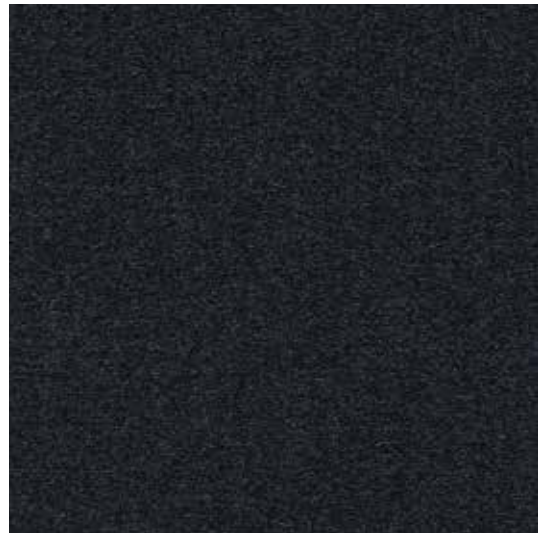


Cambridge & 386

peach perfect



Cambridge & 915



Cambridge & 963

15

Perpetual& _____

At its heart, Perpetual& is a true classic that never goes out of style. Its delicate loop pile structure and complementary colour palette make it easy to combine Perpetual& with other patterns into elegant flooring designs.



Perpetual& 352



Perpetual& 519

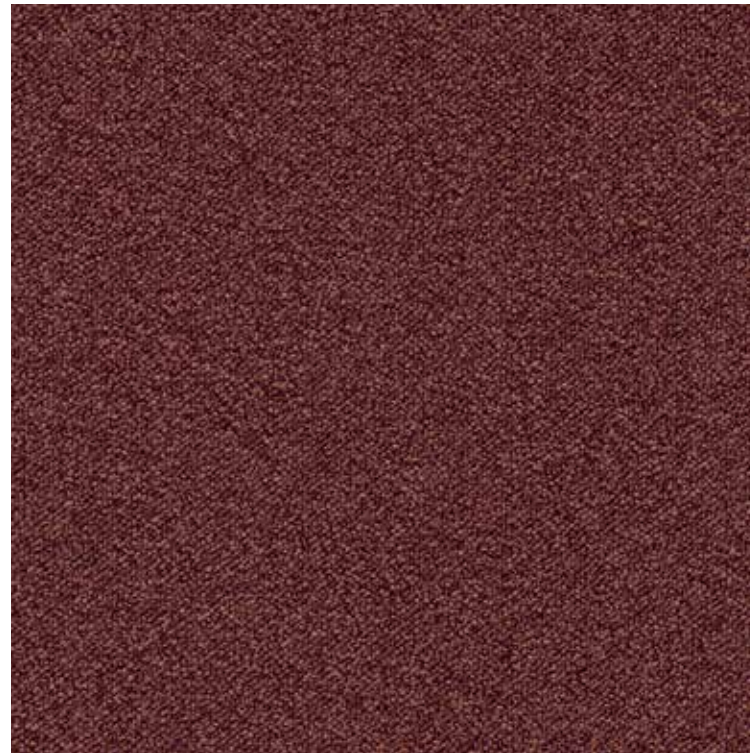


Perpetual& 517



Perpetual& 915

ruby sky

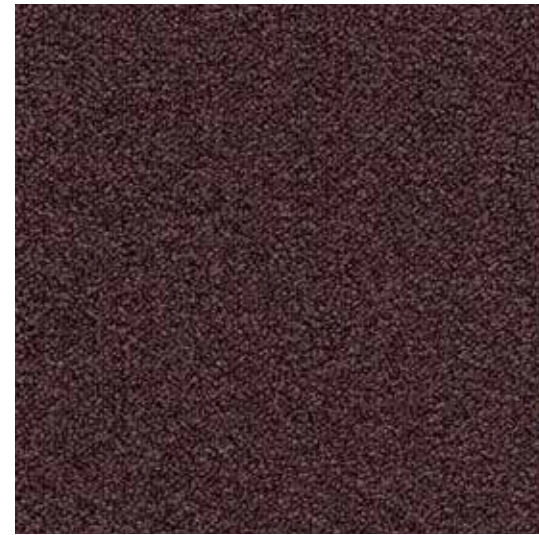


Perpetual& 352

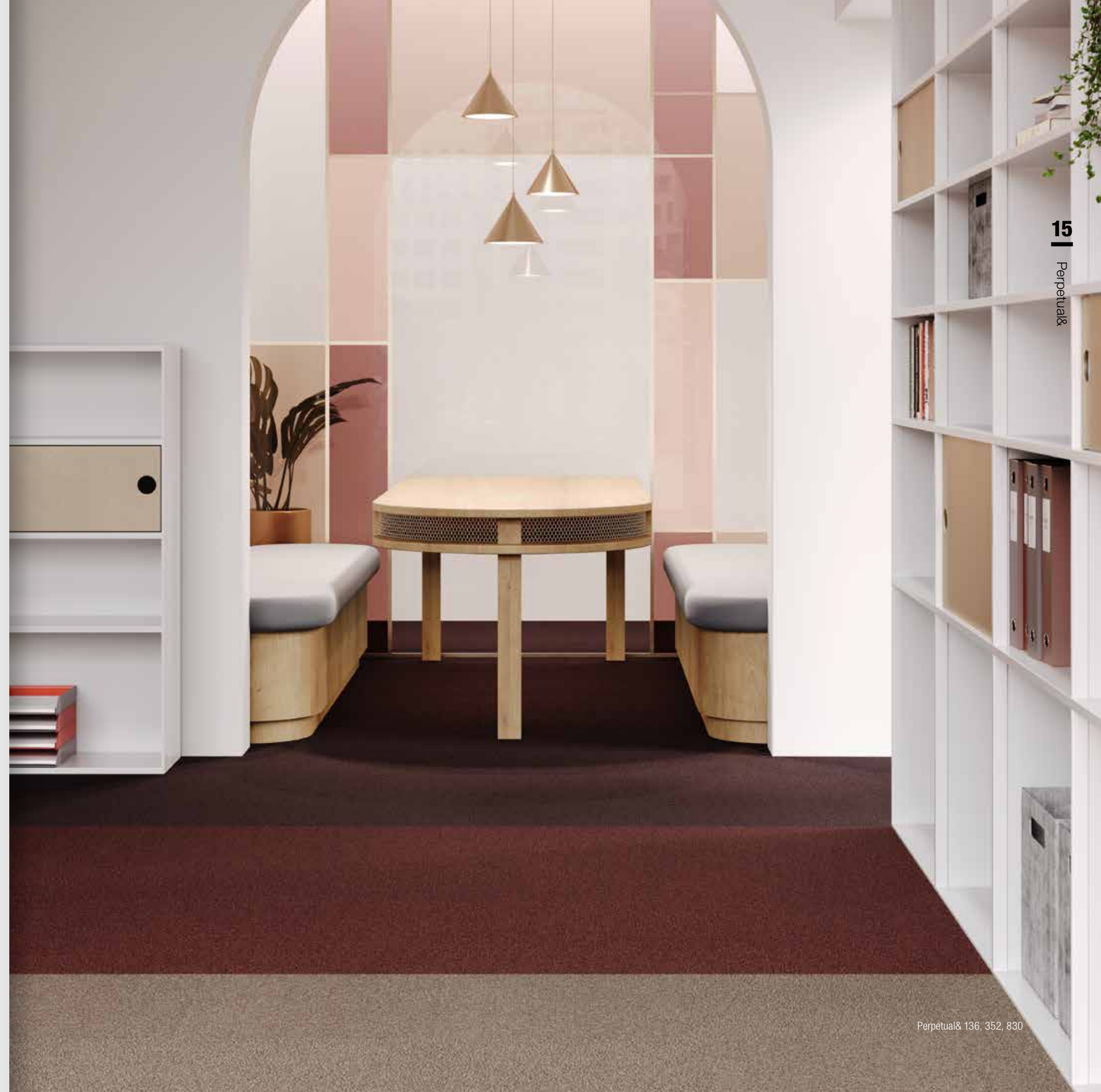
merry berry



Perpetual& 136



Perpetual& 830



Fluid&

Fluid& is a mind-blowing carpet tile collection that brings a bold splash of colour to commercial spaces.

Fluid& is inspired by the organic, free-flowing aesthetic of adding paint to water. It reflects natural fluidity and rejects any need for flawless precision. In fact, it embraces the opposite: Fluid& is perfectly imperfect in its approach to pattern.



Velvet& 616, Fluid& 604

luscious colours

The colour palette of Fluid& includes luscious tones of ochre, green, blue, rust and grey. Harmonising beautifully with all products in the &-collection, Fluid& can be used alongside the other designs for a tone on tone effect.



Fluid& 604



Fluid& 569, Fashion& 512*

(* custom colour, available from 200 m²)

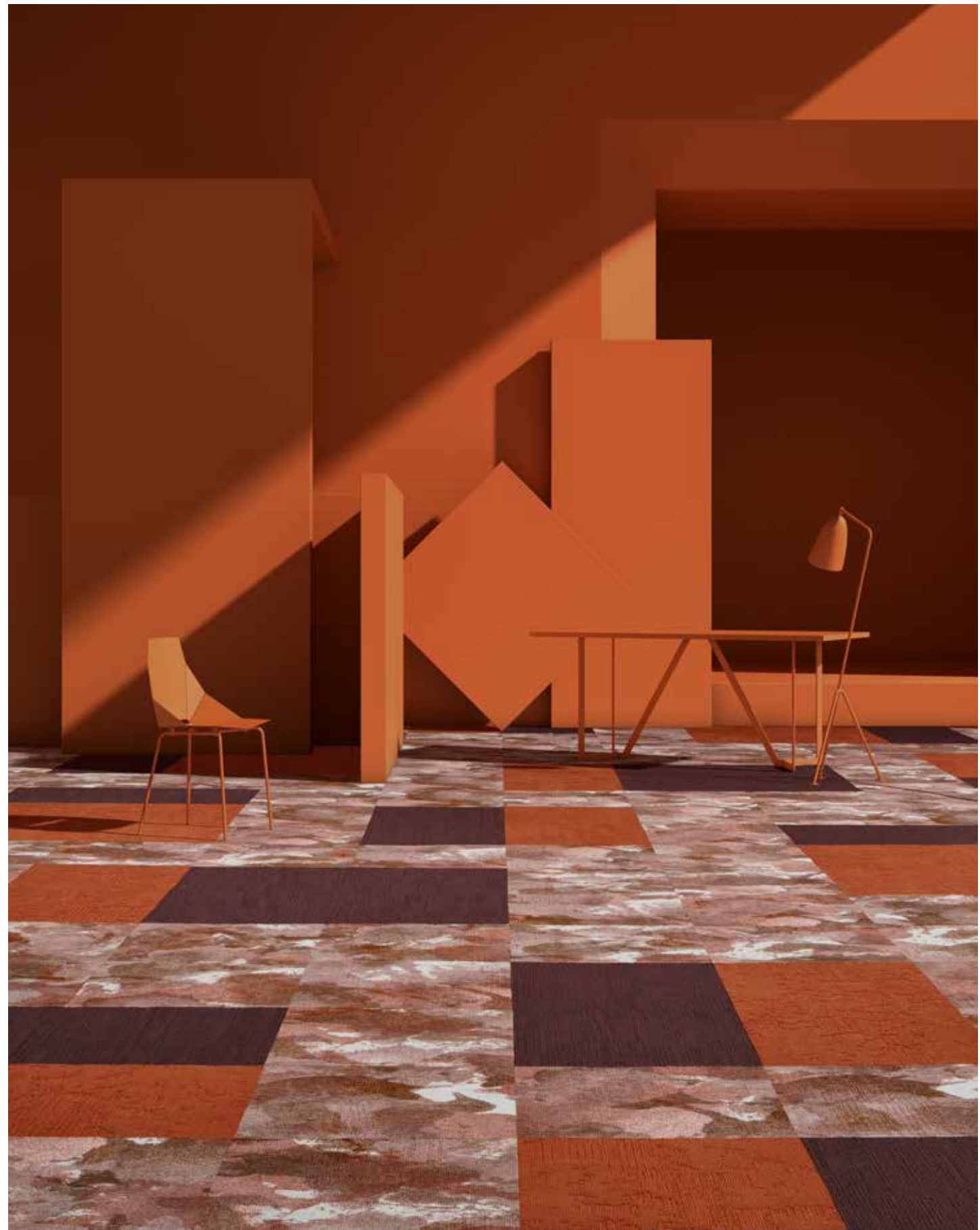


Fluid& 569



Fluid& 306

With a flowing pattern that's forever elegant, Fluid& offers new creative possibilities to commercial interiors. Whether you want to add extra depth to mix & match layouts, or use this powerful design on its own, Fluid& is ready and waiting for your next project.



Fluid& 306, Fashion& 832, Velvet& 283

48

Fashion& _____

Fashion& uses the power of colour upon a timeless base for a look that adds personality to any space. With its linear texture, subtle shine and rich colours, Fashion& brings a carpet tile for every style. Working as the perfect tonal base to the beginning of a powerful layout, or as a free-form expression of colour in bold blocking, Fashion& lets you pick your own flooring style.

Choose your colour(s) from three **fashion-inspired themes** for a look confident in its use of hue. And enjoy the endless creative possibilities Fashion& has to offer you.



— 01
scandi

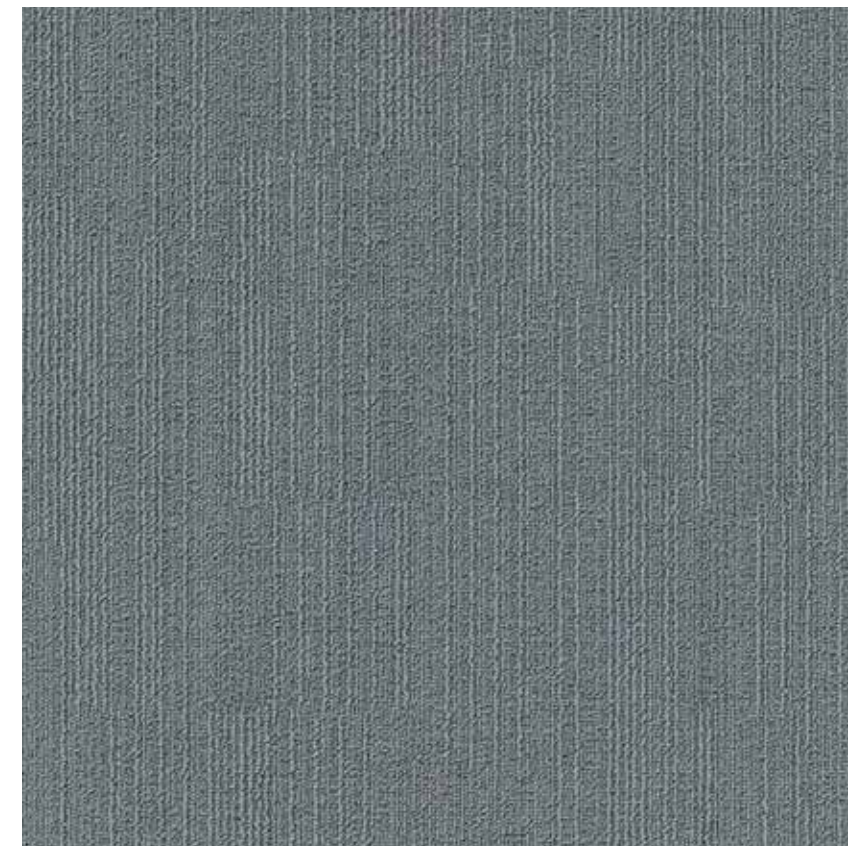
The calming pastel hues of Scandi showcase a more subtle side, representing soft minimalism and setting a sophisticated textural base for elegant interiors.



Fashion& 966



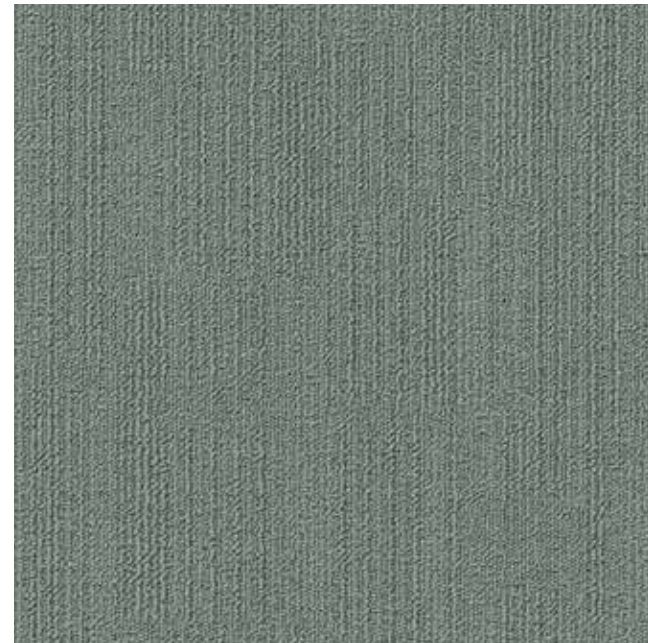
**soft
neutrals**



Fashion& 950



Fashion& 206*

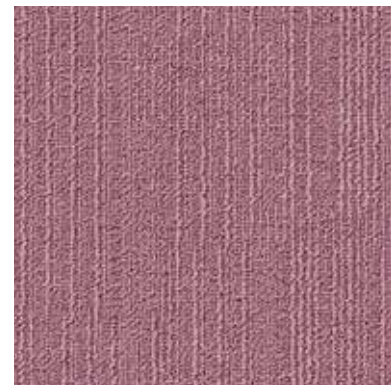


Fashion& 673

dusky pastels



Fashion& 105



Fashion& 398*



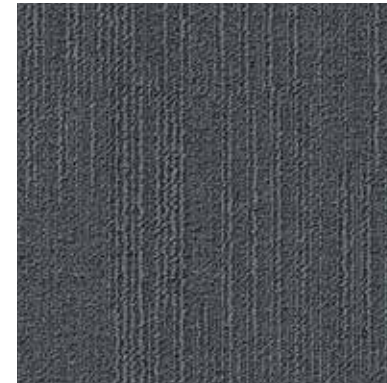
Fashion& 961*, 950, 206*, 673, 105, 398*

(*) custom colour, available from 200 m²



02
retro

Choose for colours that never lose their verve with the confidence-boosting tones of yellow, orange and brown of Retro.



Fashion& 942



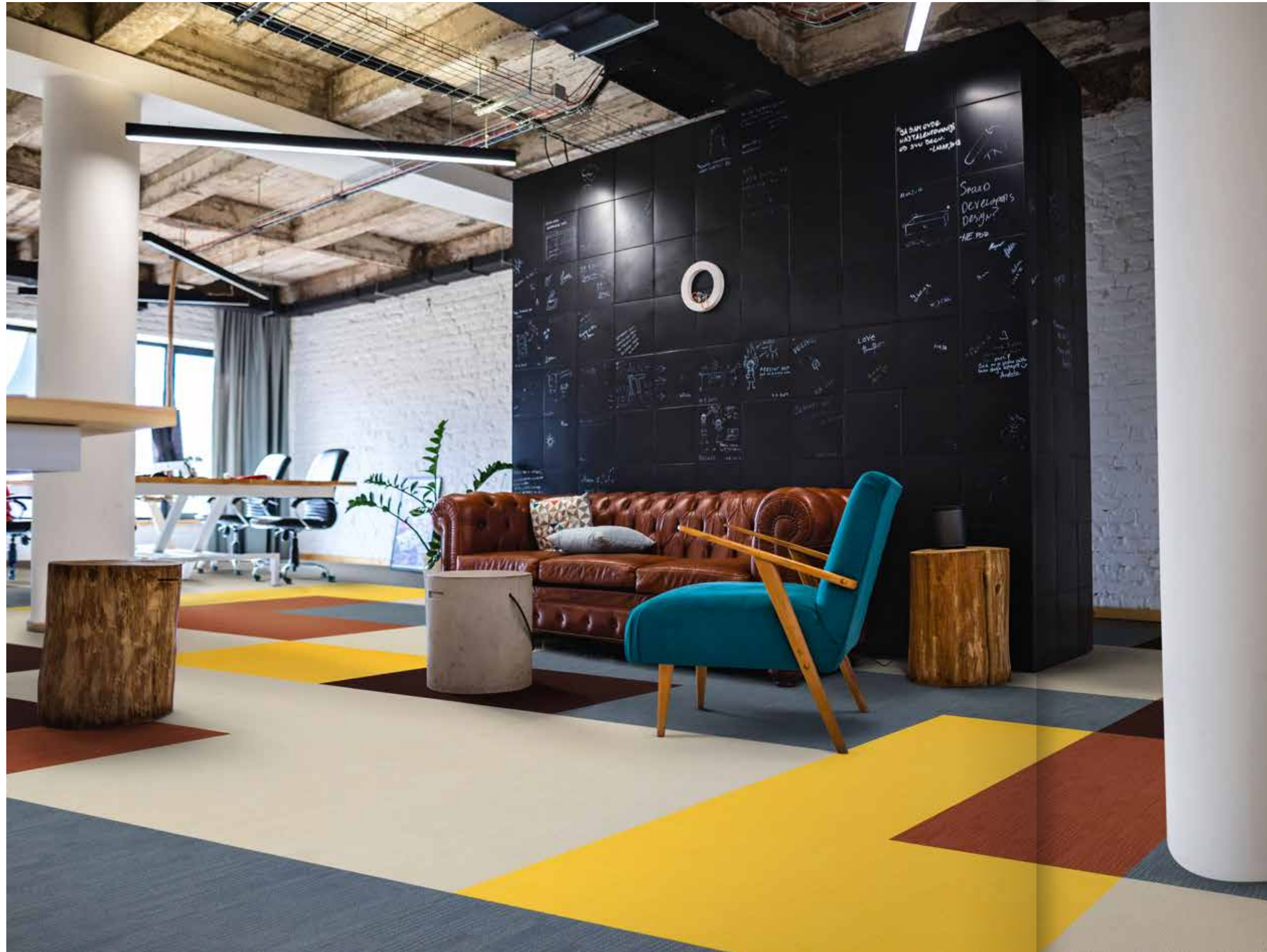
Fashion& 105



Fashion& 332*

**groovy
vintage**

(* custom colour, available from 200 m²)

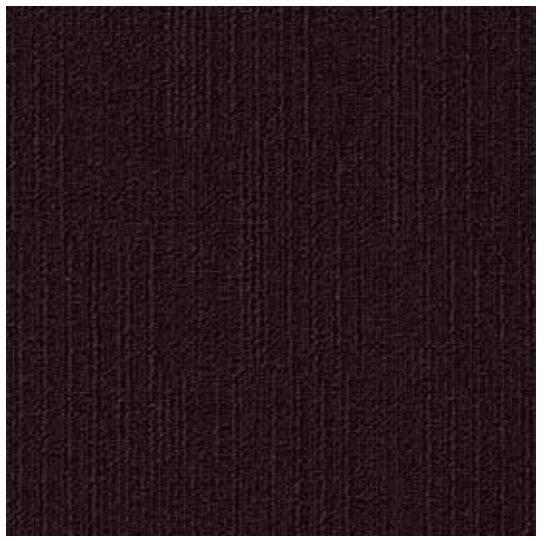


Fashion& 942, 105, 332*, 240*, 832, 819*

memory lane



Fashion& 240*



Fashion& 832



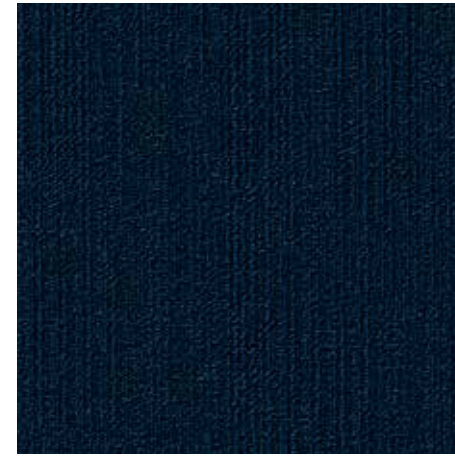
Fashion& 819*

(*) custom colour, available from 200 m²

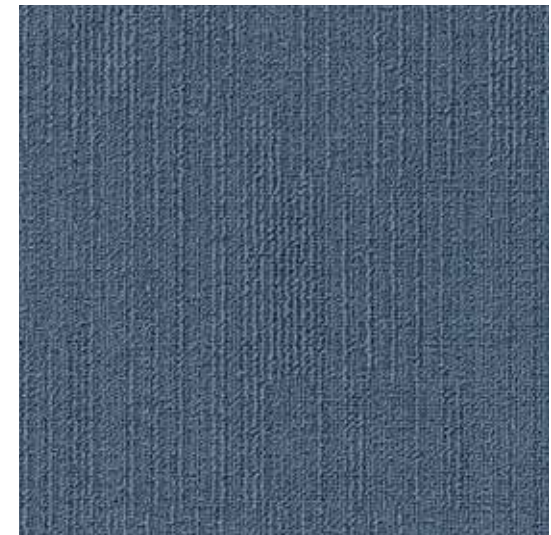


03 new natural

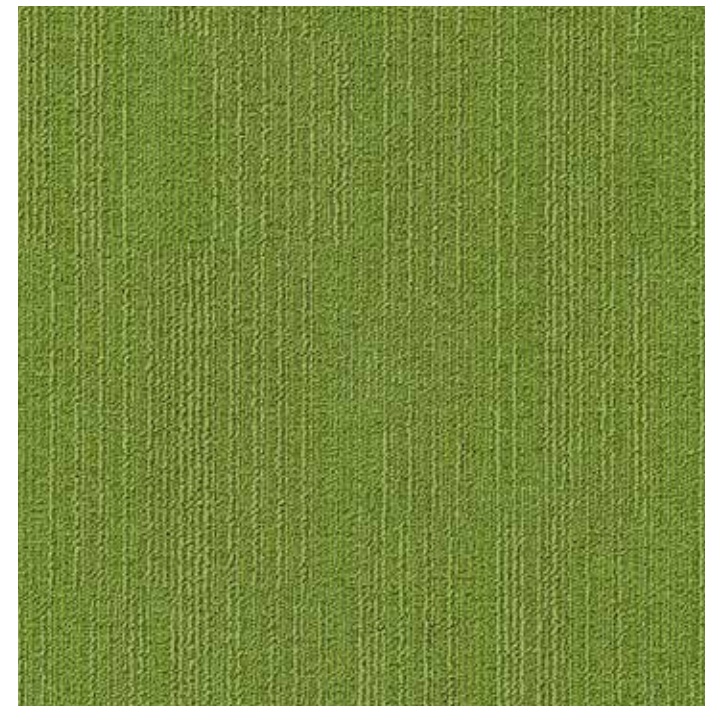
New Natural resets and revives with its deep and absorbing greens and blues, inspired by the captivating beauty of the natural world.



Fashion& 512*



Fashion& 595



Fashion& 669*

misty hills

(*) custom colour, available from 200 m²

green meadows



Fashion& 585



Fashion& 669*



Fashion& 678

(*) custom colour, available from 200 m²



Fashion& 512*, 669*, 595, 585, 678

49

Velvet& _____

Velvet& defines opulence through lavish textural contrast and rich colours combining for the look of elegant, time-worn velvet. A tight and dense structure interspersed by areas of velours for a rich velvet-feel.



Velvet& 662

Luxurious hues starring rust, navy, ocean, burgundy, jade, ochre, purple and grey are given tonal duality through random tip-sheared texture.



Velvet& 130, 573, 662 & 965





Velvet& 541 & 573



Our Velvet& collection won the 'Special Mention' award in the Building and Elements category of the German Design Awards 2021. This award is given to designs that feature particularly successful aspects or solutions.

mix&match

Although all the designs in the &-collection can be used in mesmerising singularity, they are developed to coordinate perfectly and create stunning layouts when mixed & matched with each other.



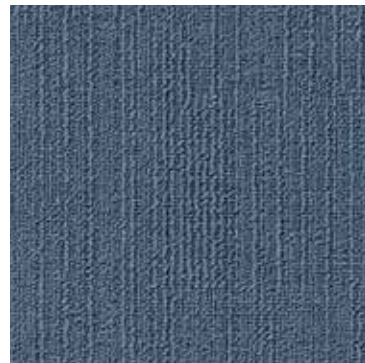
Cambridge& 506



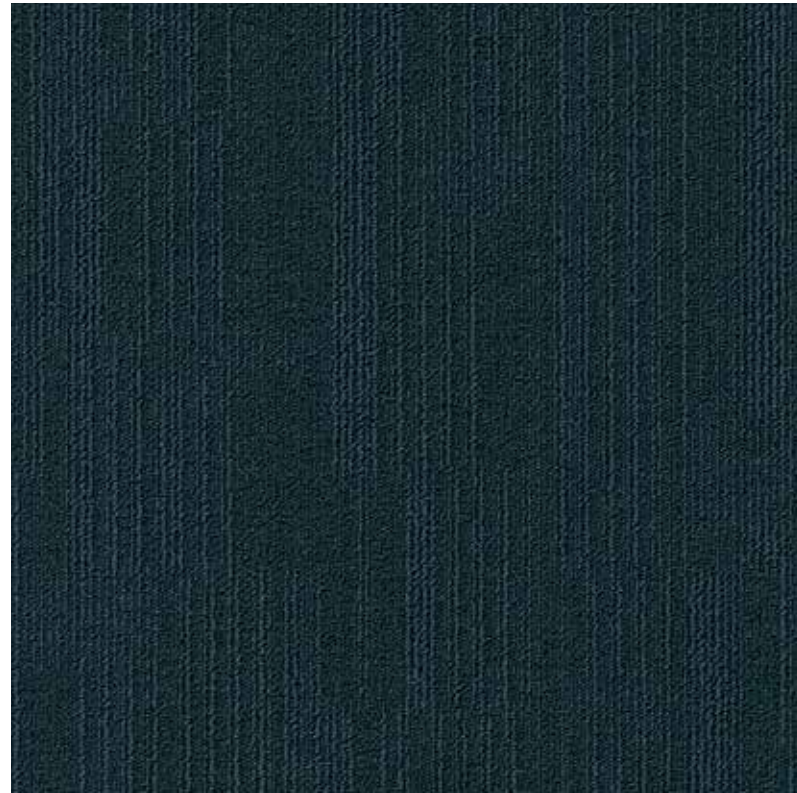
Perpetual& 519



Velvet& 541



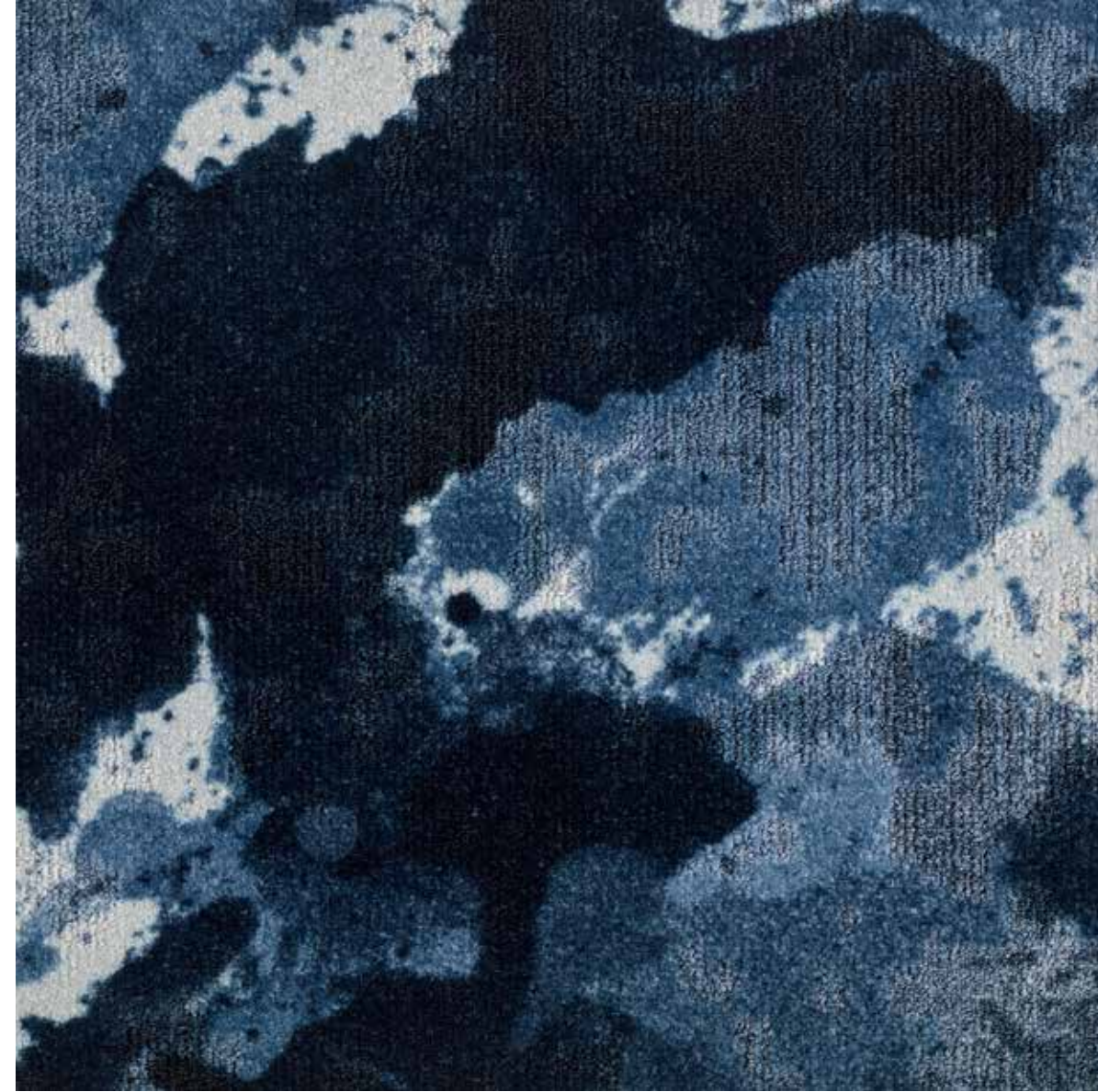
Fashion& 595



Fashion& 585



Fashion& 512



Fluid& 569

majestic blue

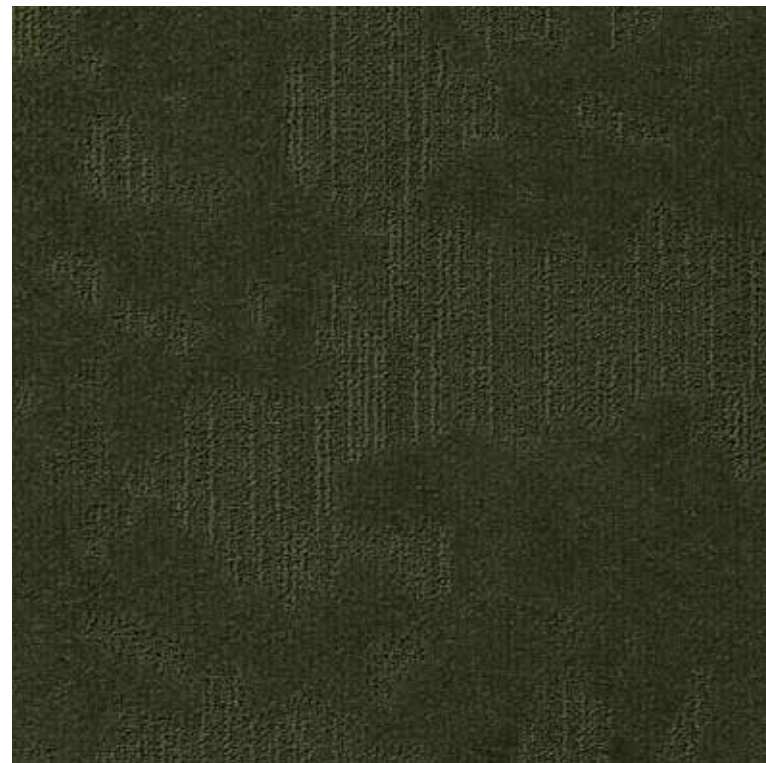


Fluid& 604



Velvet& 616

luscious green



Velvet& 662



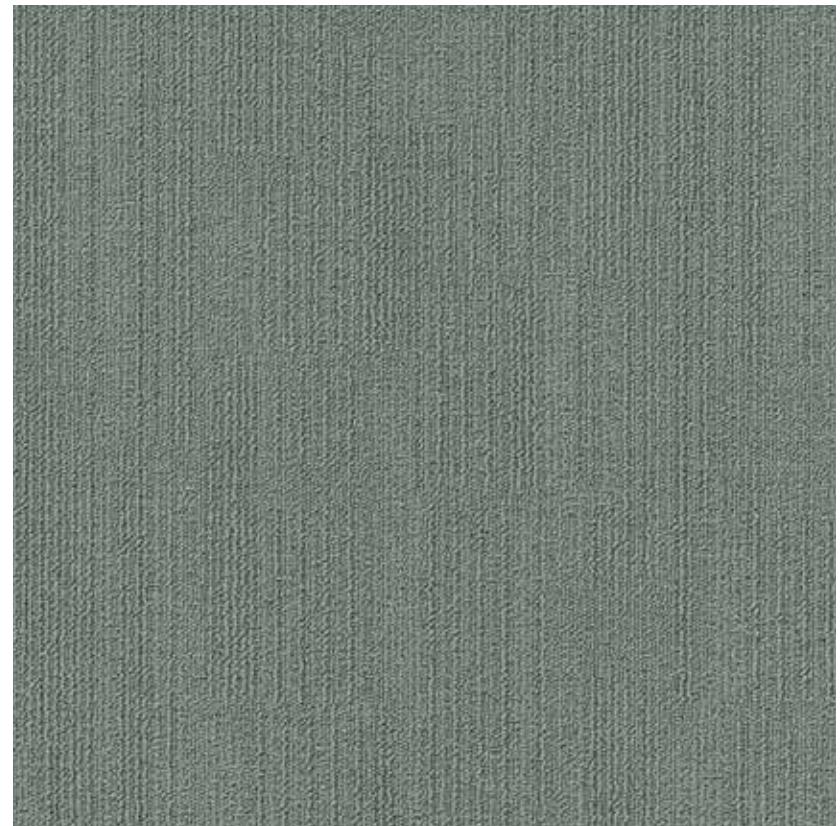
Cambridge& 616



Perpetual& 626



Fashion& 678



Fashion& 673



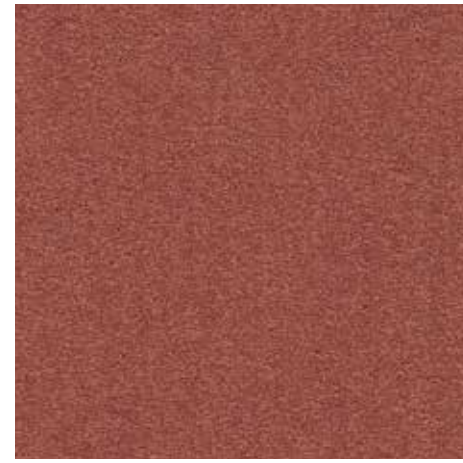
Fluid& 604, Velvet& 616, Fashion& 673, Perpetual& 626, Cambridge& 613



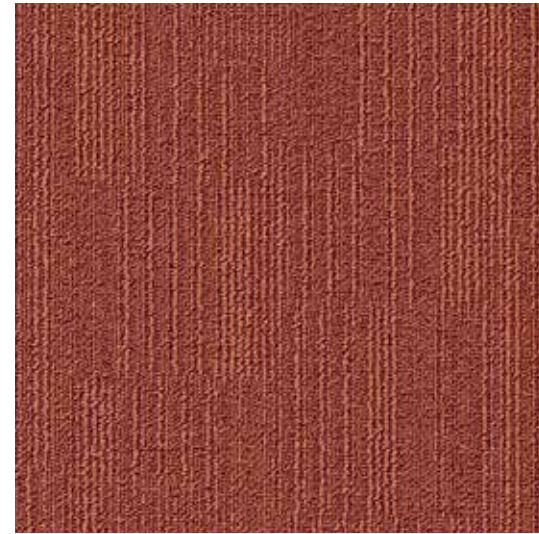
Fluid& 604, Velvet& 616



Fashion& 105



Cambridge& 303

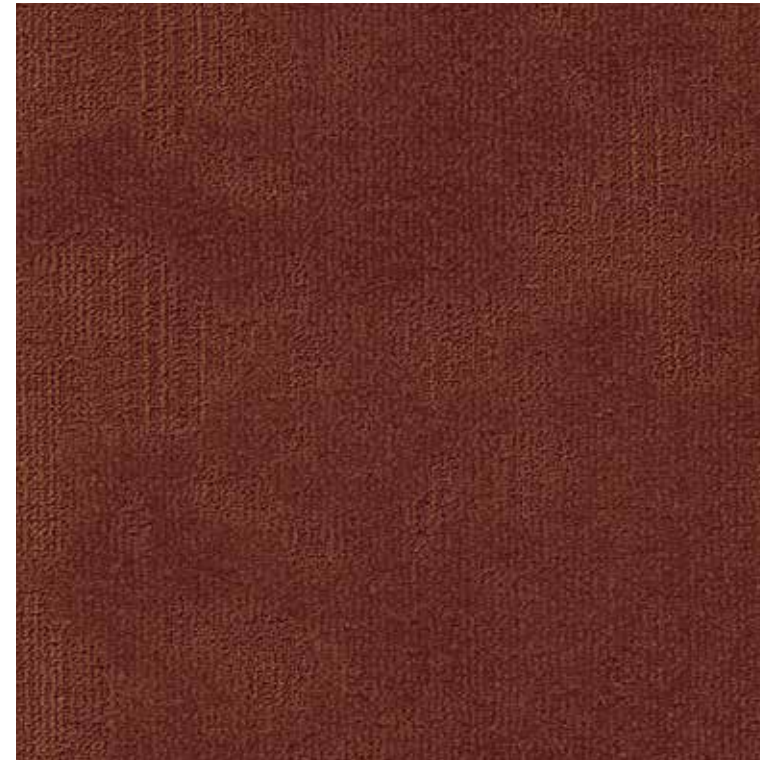


Fashion& 819*

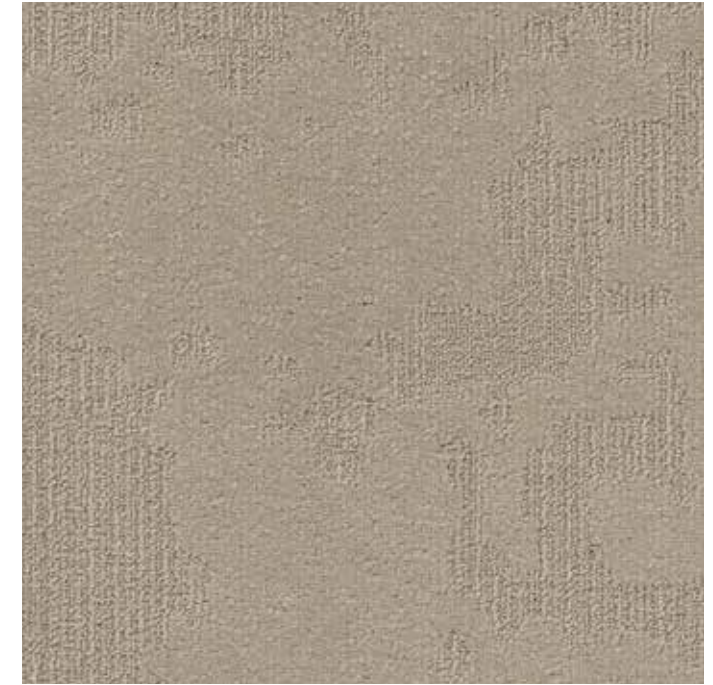
lavish rust



Fluid& 306



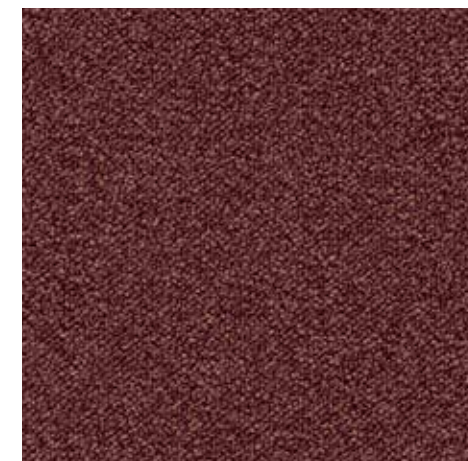
Velvet& 283



Velvet& 130



Fashion& 832



Perpetual& 352

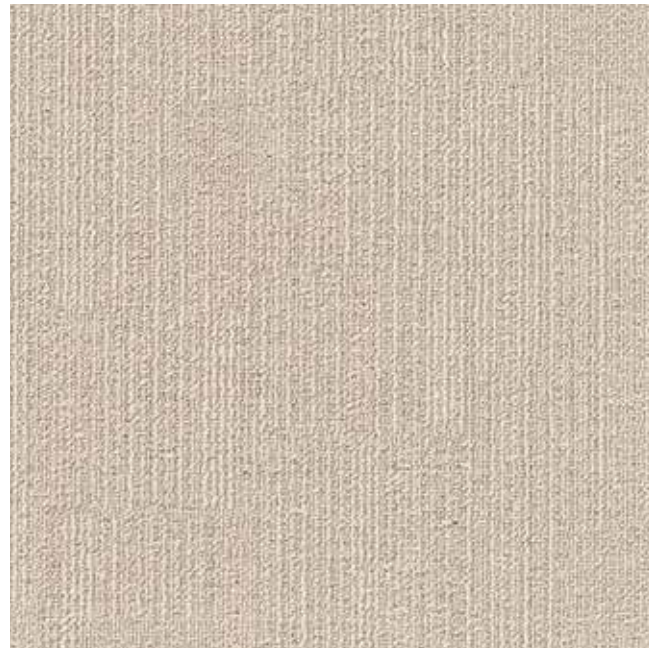
(*) custom colour, available from 200 m²



Cambridge& 224



Velvet& 213



Fashion& 105



Perpetual& 136



Velvet& 212



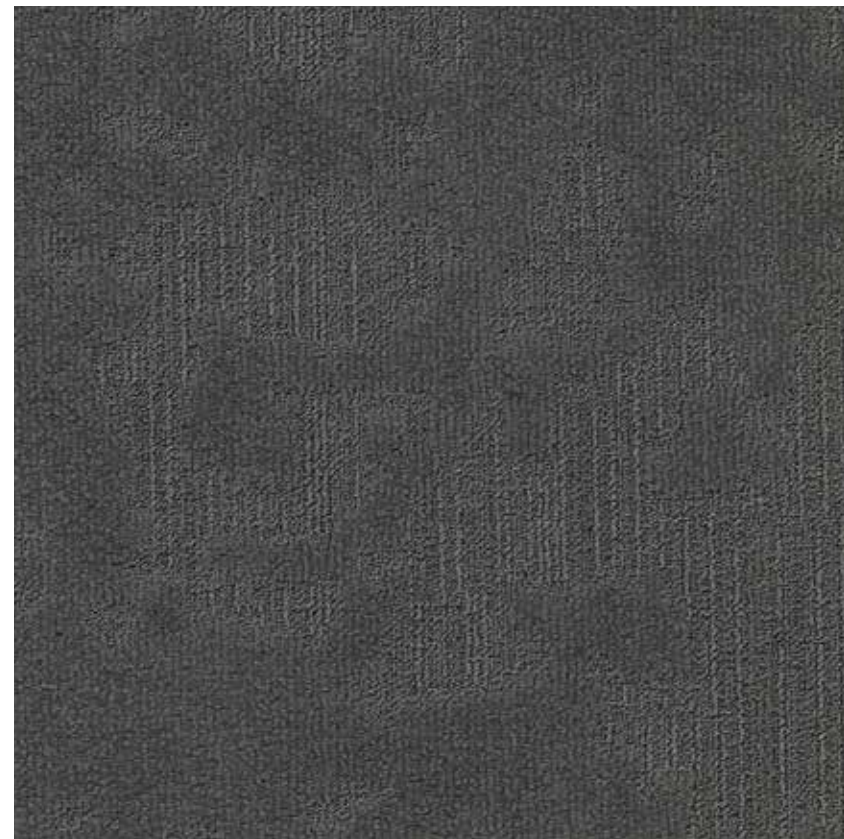
Fluid& 224



Velvet& 130

**spicy
yellow**



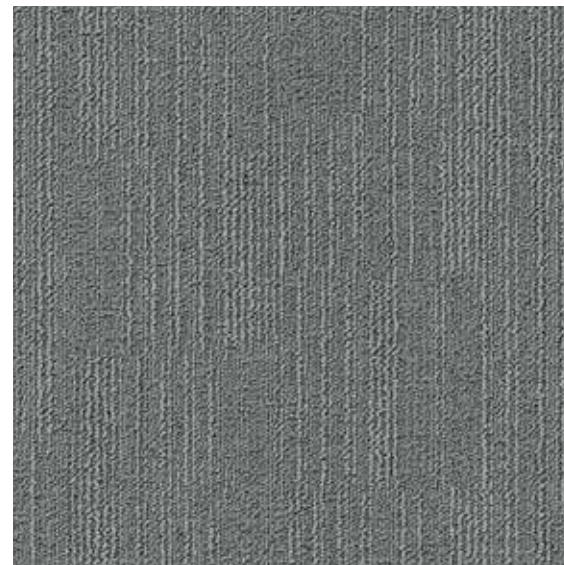


Velvet& 907

**creamy
beige**



Cambridge& 915



Fashion& 936*



Fluid& 850



Perpetual& 942

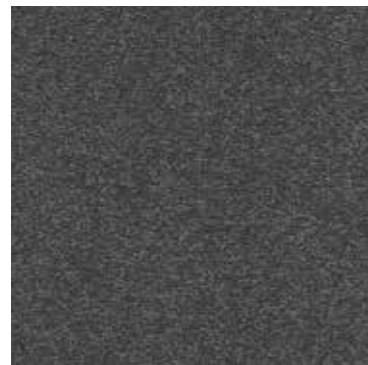
(* custom colour, available from 200 m²)



Fluid& 961



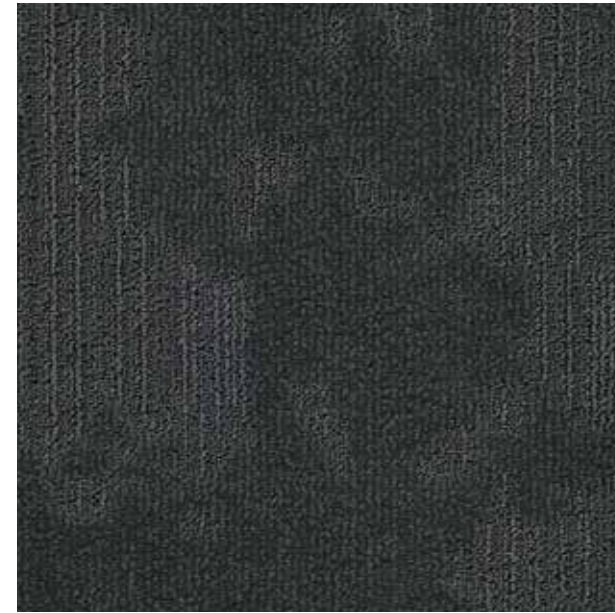
Fashion& 950



Cambridge& 994



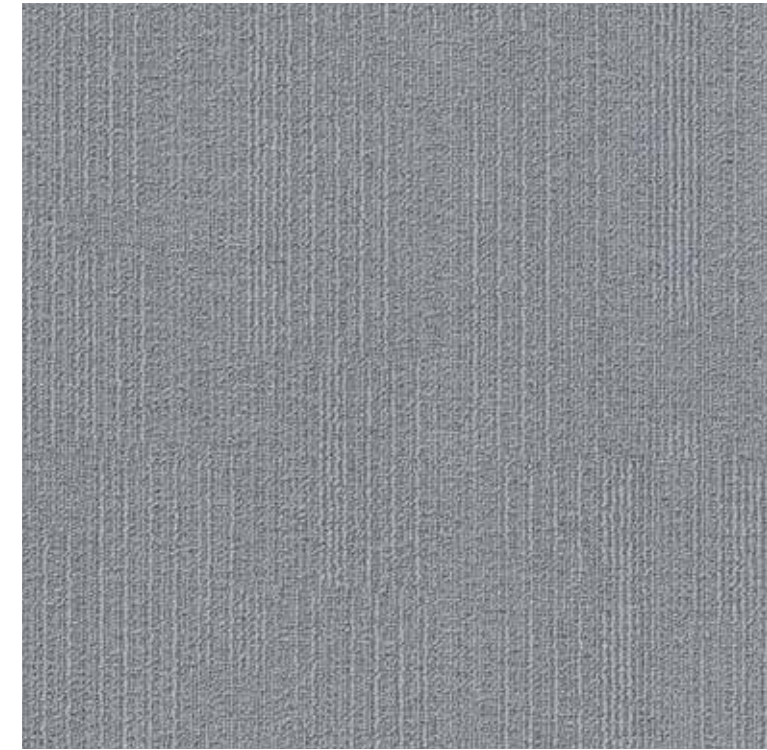
Fashion& 966



Velvet& 963



Perpetual& 915

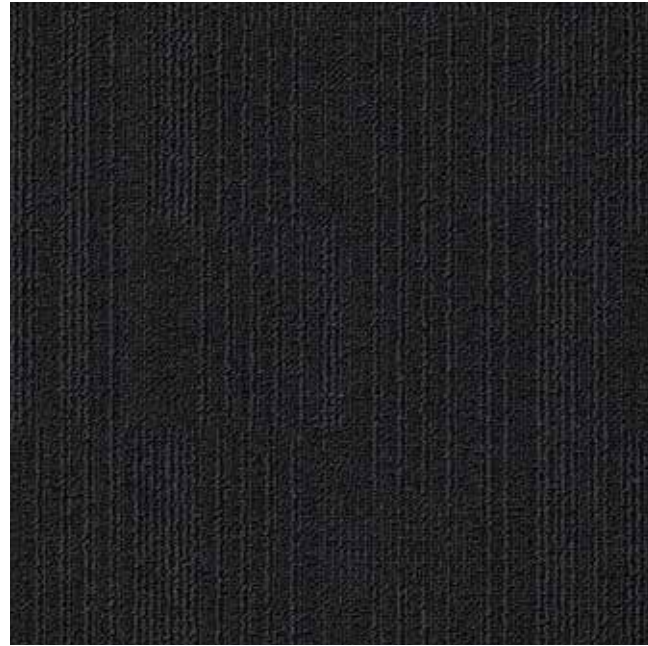


Fashion& 979

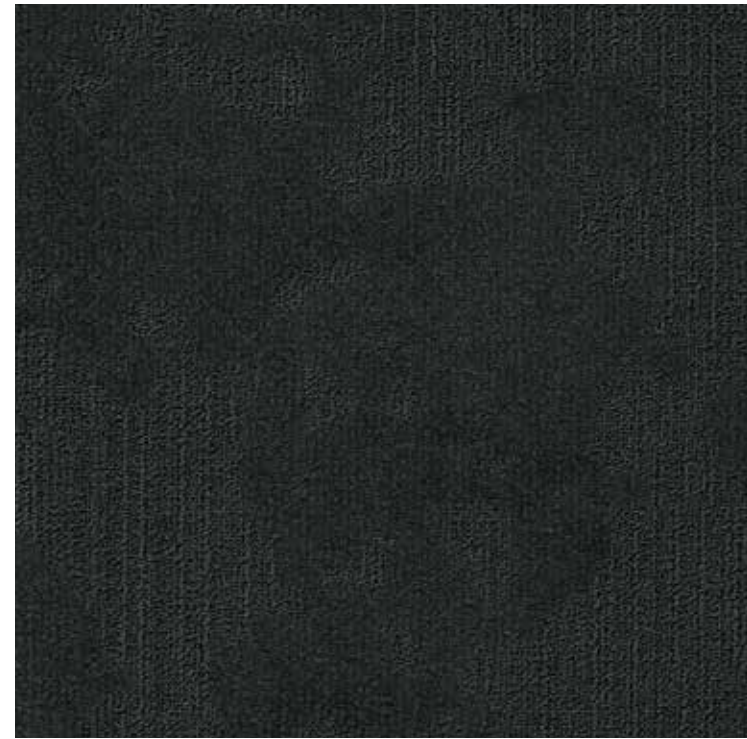
mysterious grey



Cambridge& 965

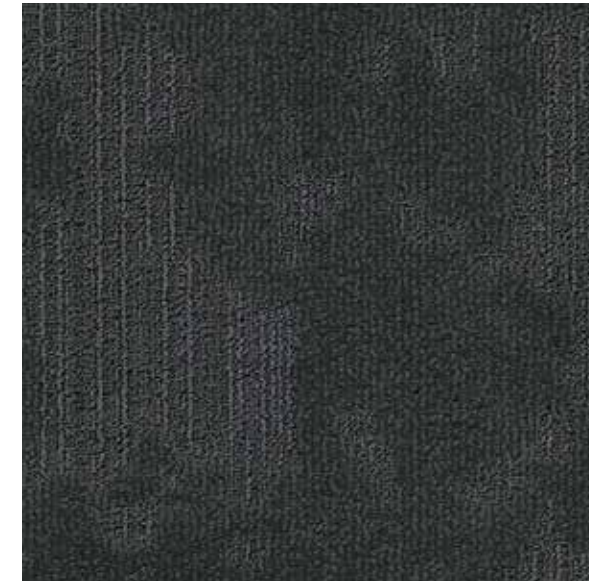


Fashion& 966

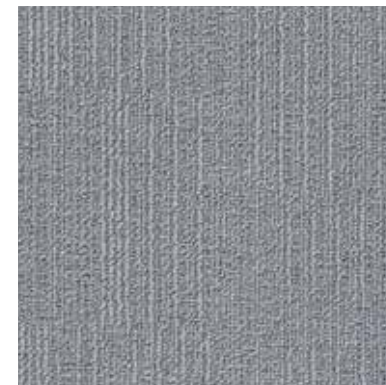


Velvet& 965

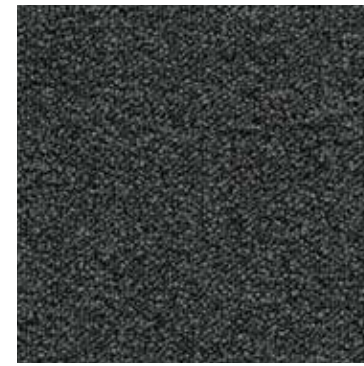
carbon grey



Velvet& 963



Fashion& 979



Perpetual& 965



Perpetual& 966



Fluid& 990

Projects

Vienna House

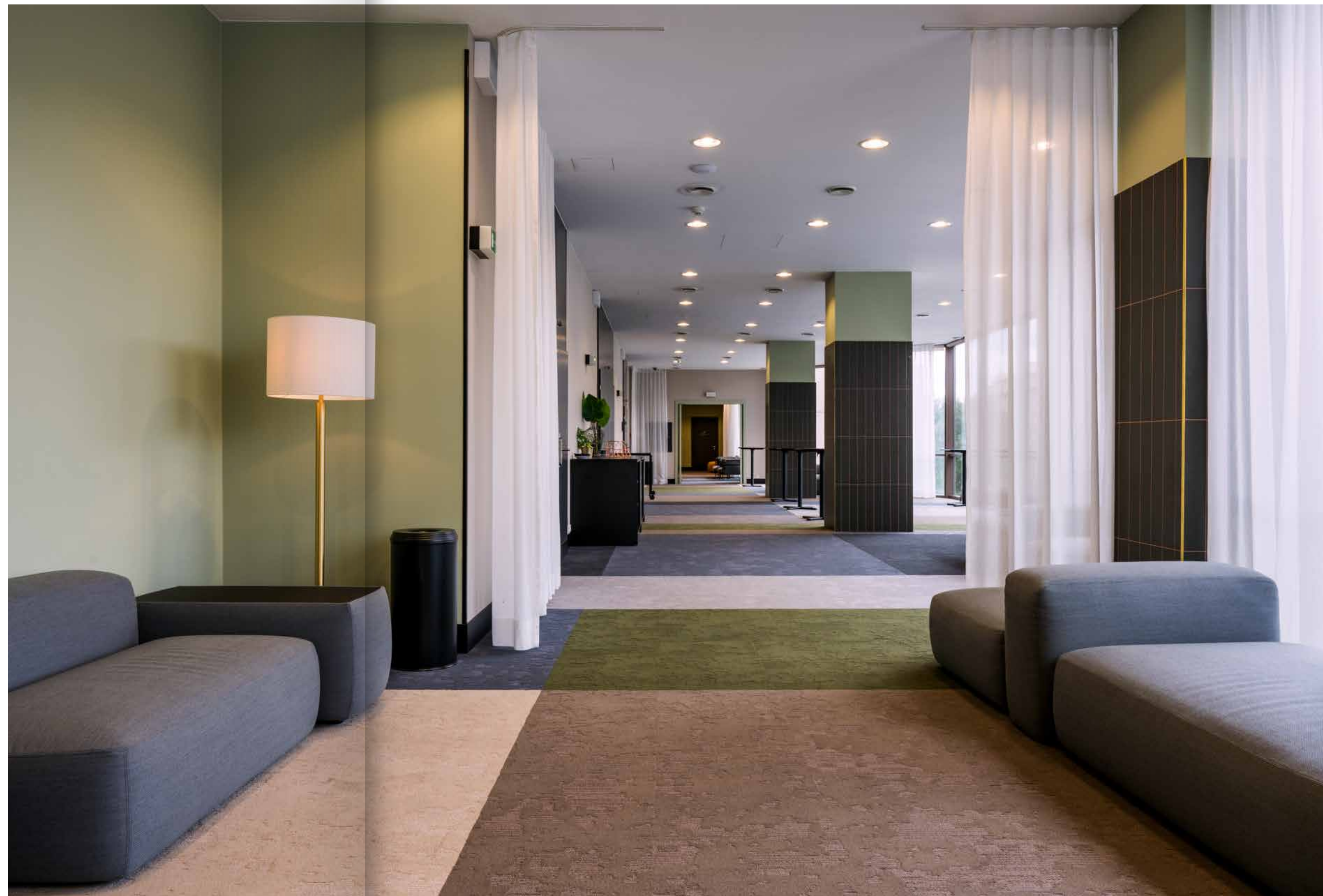
Czech Republic
Surface area: 2505 m²
Collections: Velvet&
Architect: BWM Architekten Wien



Velvet& 130, 965



Velvet& 130, 662, 823, 907 932, 963, 965



Velvet& 130, 662, 823, 907, 932, 963, 965



Van der Valk Duiven

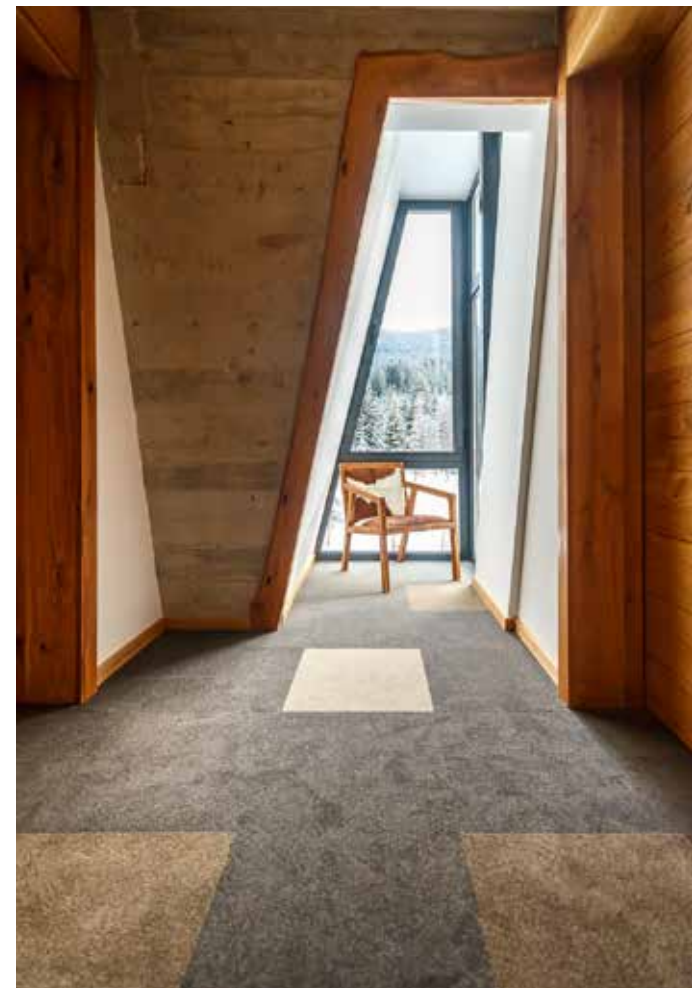
The Netherlands
Surface area: 115 m²
Collection: Fluid&
Architect: Hans Kuijten



Fluid& 604

Pino Nature Hotel

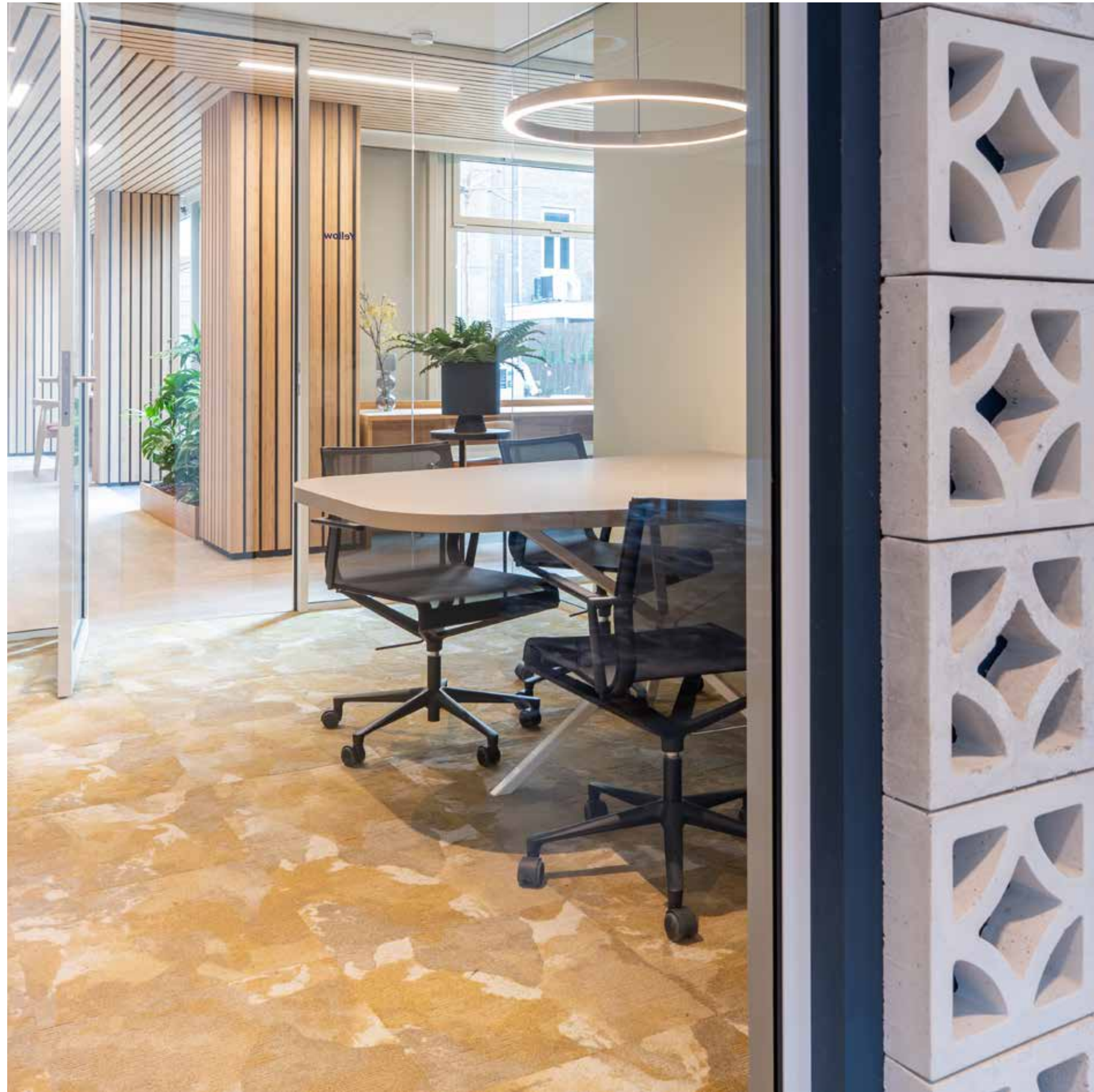
Bosnia & Herzegovina
Surface area: 725 m²
Collections: Cambridge &
Architect: Studio Zec



Cambridge & 817, 823, 915



Cambridge & 613



Fluid& 224

Newday

The Netherlands
 Surface area: 165 m²
 Collection: Fluid&
 Architect: ditt. Officemakers



Fluid& 306



Fluid& 306, 990



Fluid& 990



De Goede Woning

The Netherlands
Surface area: 830 m²
Collection: Fashion&
Architect: Helga Snel architecten



Fashion& 673, 950



Fashion& 136

Fashion& 950

Koning Willem I College

The Netherlands
Surface area: 170 m²
Collection: Fluid&
Architect: Pelsler



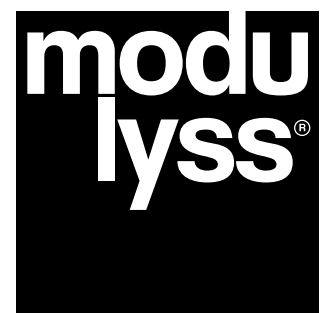
Fluid& 306



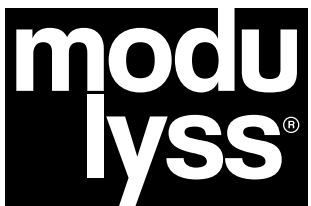
Fluid& 306, 569

explore, inspire, share.

Got an inspiring project using the &-collection? Send us your project and who knows you'll get featured in the next edition of this lookbook!



www.modulyss.com



www.modulyss.com