

# DESIGN | FLOORS

by **ivc** group

## ULTIMO

A wide range of nature true wood and stone looks from elegant designs and bright shades to exciting decors and darker tones.





# BEAR OAK



**Bear Oak**  
24823



**Bear Oak**  
24851



**Bear Oak**  
24921



**Bear Oak**  
24938



Available in:  
19,6 x 132 cm



Available in:  
19,1 x 131,6 cm



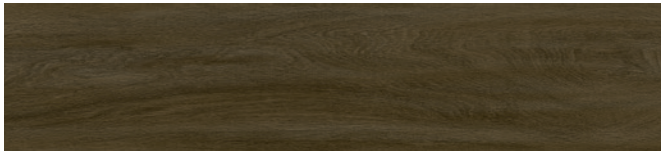
4 sided bevel



# CASABLANCA OAK



Casablanca Oak  
24123



Casablanca Oak  
24890



Casablanca Oak  
24937



Casablanca Oak  
24957



Casablanca Oak  
24983



Available in:  
19,6 x 132 cm



Available in:  
19,1 x 131,6 cm



4 sided bevel



# CHAPMAN OAK



**Chapman Oak**  
24126



**Chapman Oak**  
24238



**Chapman Oak**  
24245



**Chapman Oak**  
24876



**Chapman Oak**  
24913



**Available in:**  
19,6 x 132 cm



**Available in:**  
19,1 x 131,6 cm



**4 sided bevel**





# COLOMBIA PINE



Colombia Pine  
24243



Colombia Pine  
24450



Colombia Pine  
24832



Available in:  
19,6 x 132 cm



Available in:  
19,1 x 131,6 cm



4 sided bevel



# EDEN WALNUT



**Eden Walnut**  
28225



**Eden Walnut**  
28843



**Available in:**  
19,6 x 132 cm



**Available in:**  
19,1 x 131,6 cm



**4 sided bevel**



# MARSH WOOD



Marsh Wood  
22220



Marsh Wood  
22852



Available in:  
19,6 x 132 cm



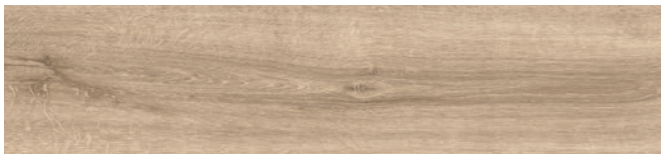
Available in:  
19,1 x 131,6 cm



4 sided bevel



# SUMMER OAK



Summer Oak  
24219



Summer Oak  
24244



Summer Oak  
24432



Summer Oak  
24820



Summer Oak  
24867



Summer Oak  
24935



Available in:  
19,6 x 132 cm



Available in:  
19,1 x 131,6 cm



4 sided bevel





# ARMOUR



Armour  
46964



Armour  
46995



Available in:  
32,9 x 65,9 cm



Available in:  
32,4 x 65,5 cm



4 sided bevel



# CEMENT STONE



Cement Stone  
46126



Cement Stone  
46930



Cement Stone  
46944



Cement Stone  
46994



Available in:  
32,9 x 65,9 cm



Available in:  
32,4 x 65,5 cm

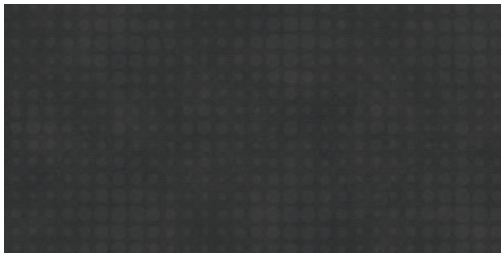


4 sided bevel

# DOTS CEMENT



Dots Cement  
46128



Dots Cement  
46998



Available in:  
32,9 x 65,9 cm

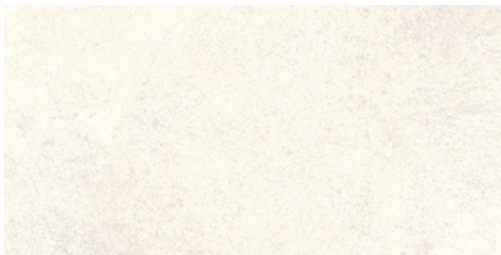


Available in:  
32,4 x 65,5 cm

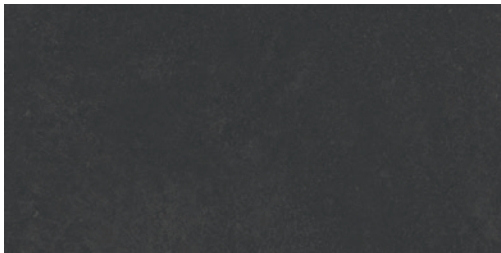


4 sided bevel

# GLINT CEMENT



Glint Cement  
46127



Glint Cement  
46991



Available in:  
32,9 x 65,9 cm



Available in:  
32,4 x 65,5 cm



4 sided bevel



# DORATO STONE



Dorato Stone  
40862



Dorato Stone  
40937



Dorato Stone  
40992



Available in:  
32,9 x 65,9cm



Available in:  
32,4 x 65,5cm

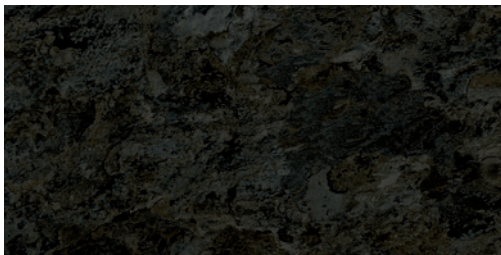


4 sided bevel





# OCEAN SLATE



Ocean Slate  
36970



Available in:  
32,9 x 65,9cm



Available in:  
32,4 x 65,5cm



4 sided bevel



# OLYMPIA



Olympia  
36223



Available in:  
32,9 x 65,9cm



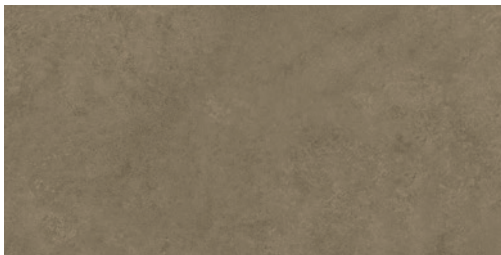
Available in:  
32,4 x 65,5cm



4 sided bevel



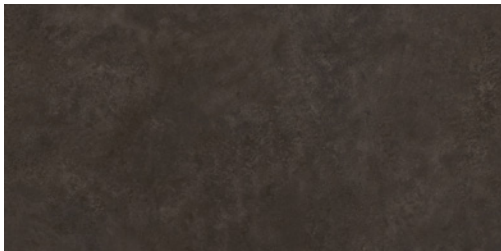
# PERLATO STONE



Perlato Stone  
46950



Perlato Stone  
46968



Perlato Stone  
46972



Available in:  
32,9 x 65,9cm



Available in:  
32,4 x 65,5cm



4 sided bevel



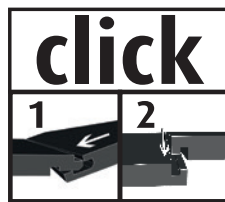
# INSTALLATION

Our Design Floors can be installed by full adhesion or by means of a clicking system.

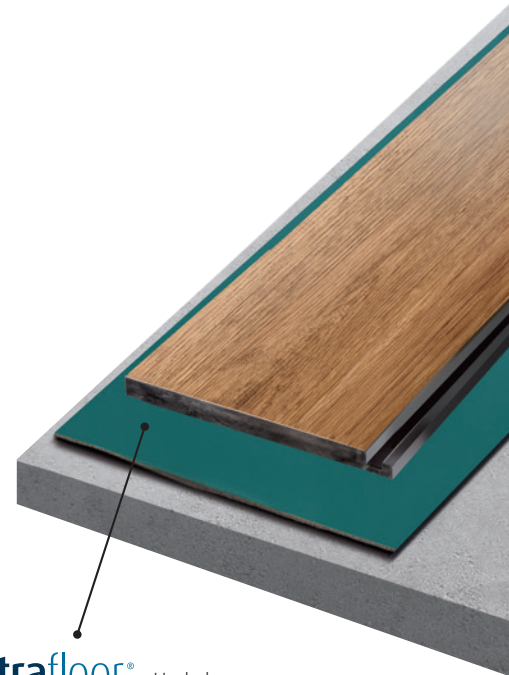
## Ultimo Click

Click flooring is specially designed for even quicker and easier installation. Each piece simply locks directly into place, giving the same stunning aesthetic qualities as a traditional installation, but **faster and without the need for adhesive.**

Click flooring ensures a solid installation through **an enhanced vertical locking system**, outperforming other products on the market.



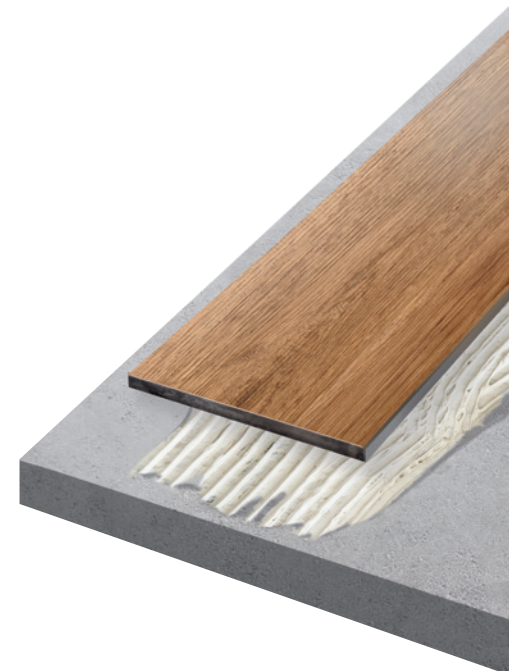
**xtrafloor**® Underlay  
Smart Flooring Solutions



## Ultimo Dryback

Dryback flooring has to be **glued** completely onto a solid and smooth **subfloor.**

A suitable PVC adhesive therefore has to be used.



For detailed installation instructions, please check [www.installandclean.com](http://www.installandclean.com)

## BENEFITS



### Easy fit angle drop click system

Fast and easy installation.



### Water resistant

An easy clean water resistant wear layer makes design flooring suitable for any room, even bathrooms and kitchens.



### Soundproof

Design flooring absorbs sound, giving better acoustics in the home or working environment.



### Easy maintenance

No expensive cleaning agents are required to keep your floor at its best; just a simple broom, mop and vacuum cleaner. A design floor will not harbor dust mites and other allergens.



### Supercompact build-up

Dryback : 2,5 mm  
Click: 4,5 mm + underlay



### Comfortable floor

Pleasant, warm floor.



# TECHNICAL PERFORMANCE

**100% BELGIUM**  
DESIGNED AND  
MADE IN 



## IAQ – Indoor Air Quality

As far as air quality is concerned, all design floors adhere to the German AgBB standard, the strictest air quality standard in the world.



## Superguard®

The upper Superguard® layer is scuff and stain resistant and is easy to clean, offering maximum protection with minimum maintenance.



## No marks and spots

Thanks to their strong wear layer, combined with the PU layer, our design floors are specifically resistant to spots and shoe marks, which can be removed within a moment. This results in a pet friendly floor.



## Dimensional stability

Very good dimensional stability, not influenced by changes in temperature.



## Minimal residual indentation

Our design floors adhere to all strict standards concerning residual indentations caused by chairs, cupboards, heels, etc.

# TECHNICAL SPECIFICATIONS

**100% BELGIUM**  
DESIGNED AND  
MADE IN 



PRODUCT INFORMATION		Dryback	Click
Level of use	EN ISO 10874	23 - 33 - 42	23 - 33 - 42
Total thickness	EN ISO 24346	2,5 mm (100 mils)	4,5 mm (100 mils)
Wear layer	EN ISO 24340	0,55 mm (22 mils)	0,55 mm (22 mils)
Wear layer PUR treatment		Superguard®	Superguard®
Total weight g/m <sup>2</sup>	EN ISO 23997	4059	7691
<b>SIZE &amp; PACKING</b>			
Planks	EN ISO 24342	19,6 x 132,0 cm (7,72" x 51,97")	19,1 x 131,6 cm (7,52" x 51,81")
Tiles A	EN ISO 24342	32,9 x 65,9 cm (12,95" x 25,94")	32,4 x 65,5 cm (12,76" x 25,79")
Box planks		3,62 m <sup>2</sup> /box (38,99 ft <sup>2</sup> /box) 14 pcs/box	1,76 m <sup>2</sup> /box (18,94 ft <sup>2</sup> /box) 7 pcs/box
Box tiles A		3,47 m <sup>2</sup> /box (37,34 ft <sup>2</sup> /box) 16 pcs/box	1,49 m <sup>2</sup> /box (15,99 ft <sup>2</sup> /box) 7 pcs/box
<b>TEST RESULTS</b>			
Inflammability	EN 13501	Bfl-S1	Bfl-S1
Scratch resistance	EN ISO 660-2	Class T	Class T
Squareness & straightness	EN ISO 24342	≤ 0,35 mm	≤ 0,35 mm
Slip resistance	EN 13893	DS	DS
Slip restraint	DIN 51130	R10	R10
Residual indentation	EN ISO 24343-1	≤ 0,10 mm (Average result measured: 0,03mm)	≤ 0,10 mm
Furniture leg resistance	EN ISO 16581	No cracks, no damage	No cracks, no damage
Curling	EN ISO 23999	≤ 2 mm	≤ 2 mm
Electrical resistance	EN 1081	≤ 10 <sup>9</sup> Ohm	≤ 10 <sup>9</sup> Ohm
Dimensional stability	EN ISO 23999	Norm: ≤ 0,25 % Average result measured: ≤ 0,05 %	Norm: ≤ 0,25 % Average result measured: ≤ 0,05 %
Heat insulation	EN 12524	0,25 w/(m.K)	0,25 w/(m.K)
Thermal resistance R	EN 12664	0,0100 m <sup>2</sup> .K/W	0,0159 m <sup>2</sup> .K/W
Formaldehyde group	EN 717-1	E1	E1
Acoustic insulation		4 dB	4 dB
+ Xtrafloor Go:	EN ISO 717-2	-	19 dB
+ Xtrafloor Base:		-	13 dB
+ Xtrafloor Silent:		-	21 dB
Castor chair resistance	EN ISO 4918	No damage to wearlayer, no delamination but only when fixated	No damage to wearlayer, no delamination but only when fixated
Stain resistance	EN ISO 26987	Very good	Very good
Light fastness	EN ISO 105-B02	≥6	≥6
Underfloor heating	EN 12524	Suitable, max 27°C	Suitable, max 27°C
Warranty (year)		20 Residential   10 Commercial	20 Residential   10 Commercial

The warranty covers manufacturing defects and premature wear in the event of normal use.

The samples in this presentation are only cuttings of the respective products and show only a small part of the overall design and colour. With regard to colour printing of the photographic images, it is only possible to give a provisional representation of the colour.

Warranty only valid with the use of Xtrafloor®.



\*The EN 15041 Program of Control proves that the measured Floor Coverings are classified as A+ lowest category of emission levels by the French regulation of 2010/2011.

# NOTES:

---

---

---

---

---

---

---

---

---

---

---

---

---

---

---

---

a division of **ivc**group

Nijverheidslaan 29 | 8580 Avelgem | Belgium  
T +32 (0)56 653 211 | [info@ivcgroup.com](mailto:info@ivcgroup.com)  
[www.ivcgroup.com](http://www.ivcgroup.com)  
BTW BE 0866.682.231